



APPLICATION GUIDE  
TO CA TITLE 24

A SUPPLEMENTAL GUIDE TO CODE  
REVISIONS IMPACTING LIGHTING CONTROL



# TABLE OF CONTENTS

## TITLE 24 APPLICATION GUIDE

NX Lighting Controls' advanced systems and lighting controls offer a comprehensive portfolio of simple, scalable and seamless solutions for indoor and outdoor applications from a single partner. Our advanced lighting control technologies provide intuitive and flexible deployment options to meet code, enhance comfort, increase energy savings and improve operating efficiency for enterprises of any size. NX Lighting Controls' product suite includes distributed and centralized, wired and wireless systems, luminaire integrated sensors, color tuning controls, panels, occupancy sensors, photocell sensors, and emergency relays.



04	Title 24 Code Requirements for Typical Building Spaces
08	Code Summary
16	How to Use This Guide
18	Private office
20	Open Office
22	Conference Room
24	Classroom
26	Lobby
28	Corridor
29	Public Restroom
30	Private or Single Restroom
32	Stairwell
34	Warehouse
36	Gymnasium
37	Interior Level Parking Garage
38	Site With Parking Lot
39	Site Lighting With Building Mounted Lights
42	Networking Overview
44	Title 24 Part 3 2023 and Emergency Lighting
46	Automated Demand Response Lighting Controls (ADR)
48	Mobile App
50	Product Catalog
58	Support and Education



Title 24 establishes minimum requirements for energy-efficient buildings using prescriptive and performance related provisions. For more information, visit [energy.ca.gov](http://energy.ca.gov). The recommendations in this document are based on our understanding and interpretation of the code. In order to ensure full compliance, please reference the official published code.



# TITLE 24 CODE REQUIREMENTS FOR TYPICAL BUILDING SPACES

TITLE 24 APPLICATION GUIDE



	DEMAND RESPONSE CONTROLS	SHUT OFF CONTROL					
Control Requirement	Demand Response	Area Control	Multi-Level Lighting controls	Timeclock	Automatic Partial-Off Via Occupancy Sensor	Automatic Full-Off Via Occupancy Sensor	Add auto on controls
Code Provision	110.12(c),(e),130.1(e)	130.1(a)	130.1(b)	130.1(c)1A	130.1(c)6&7	130.1(c)5	
Code Summary	Buildings having a total installed lighting power of $\geq 4,000W$ (excluding spaces not requiring multilevel control) shall be capable of bi-directional demand response communication and automatically reducing general lighting power (except in excluded spaces). For buildings that do require both DR and controlled receptacles, including all required controlled receptacles must also turn off in response to demand response signals	All luminaires be functionally controlled with manual on and off lighting controls.	Any enclosed area $\geq 100ft^2$ with a lighting power density $> 0.5W/ft^2$ , shall provide multi-level lighting control.	Areas not required to be shut off by occupancy sensor may be shut off by an automatic time-switch control.	Full or Partial-off occupancy sensing are required in these areas. Partial-off occ sensing required for specified stairwells, common area corridors, parking garages, parking areas, loading & unloading zones.	Occupant-Sensing controls must be used in specific areas to shut off lighting.	Partial-ON or Vacancy Sensing Controls Provision: Sec130.1(c)5 Summary: Occupant sensing controls shall function either as Partial-ON (50-70%) or Vacancy (Manual ON only)
Private Office	•	•	•			•	
Open Office	•	•	•	•		•	•
Conf. Meeting, Multi- Purpose	•	•	•			•	•
Classroom, Lecture Hall, Training	•	•	•		•	•	•
Lobby	•	•	•	•	•	•	
Corridor	•	•		•	•	•	•
Restroom		•		•	•	•	•
Stairwell	•	•		•	•	•	
Gym/Fitness Center	•	•	•	•		•	•
Warehouse/Storage	•	•	•	•	•		
Parking Area, Interior		•	•	•			•
Exterior Lighting							

# TITLE 24 CODE REQUIREMENTS FOR TYPICAL BUILDING SPACES

TITLE 24 APPLICATION GUIDE



	LIGHT LEVEL CONTROL	EXTERIOR CONTROLS			RECEPTACLE PLUG LOAD CONTROL
Control Requirement	Automatic Multi-Level Daylight Controls	Daylight Availability	Automatic Scheduling Controls	Motion Sensing Controls	Receptacle (Plug load control)
Code Provision	130.1(d)	130.2(c)1	130.2(c)2	130.2(c)3	130.5(d)
Code Summary	Areas in designated daylight zones with total power $\geq$ 120 watts (60 Watts for parking garages) use automatic multi-level daylight controls.	Lighting shall be controlled by a photo control, astronomical time-switch control or other control to automatically shut off when daylight is available.	Controls shall be capable of reducing the lighting power by 50-90% and capable of turning the lighting off, during scheduled unoccupied periods. Scheduling a minimum of two nighttime periods with independent lighting levels is required.	Controls shall be capable of reducing the lighting power by 50-90% and capable of turning the lighting off, during unoccupied periods. Motion sensing controls shall be capable of reducing the lighting to its dim or off state no longer than 15 minutes after the area has been vacated. Motion sensors are required for most outdoor lights mounted up to 24 ft. with the exception of luminaires with max. rated wattage of 40 watts each, which are not required to have motion sensing controls.	Both controlled and uncontrolled 120-volt receptacles shall be provided in office areas, lobbies, conference rooms, kitchen areas in office spaces and copy rooms
Private Office	•				•
Open Office	•				•
Conf. Meeting, Multi- Purpose	•				•
Classroom, Lecture Hall, Training	•				
Lobby	•				•
Corridor	•				
Restroom	•				
Stairwell	•				
Gym/Fitness Center	•				
Warehouse/Storage	•				
Parking Area, Interior	•				
Exterior Lighting		•	•	•	



**CLASSROOM / LECTURE HALL / TRAINING ROOM**

	Code Provision	Minimum Control Type	Requirement
<b>ON/OFF CONTROL</b>	130.1(a)	Local switch	Readily accessible device(s) to control lighting within an enclosed space.
	130.1(c)5	Vacancy sensor (Manual On - Auto Off): Partial On (50-70% On-Full Off) or Occupancy Sensor for partial on	Automatically shuts off lighting power after vacancy of 20 minutes or less.
<b>LIGHT LEVEL CONTROL</b>	130.1(b)	Multi-level lighting controls	At least one multi-level lighting control device (manual or automatic) in enclosed areas 100ft <sup>2</sup> . or larger, or greater than 0.5 watts per ft <sup>2</sup> . Light level requirements are defined in Table 130.1-A. Note, the majority of lighting types require multiple control steps.
	130.1(d) and 140.6(d)	Automatic Daylighting controls	Sensor to reduce lighting in response to available daylight. Daylighting zones defined in Section 130.1(d)1. Primary daylight zones must be controlled separately from secondary zones. Refer to Table 130.1-A for lighting-level requirements.
<b>ADDITIONAL CONTROL</b>	110.12	Demand Response	Automatic lighting reduction by a minimum of 15% of total installed general lighting power in response to a Demand Response Signal. Required for new buildings with installed lighting power of 4,000 watts or greater.

**CONFERENCE / MEETING / MULTI-PURPOSE ROOM**

	Code Provision	Minimum Control Type	Requirement
<b>ON/OFF CONTROL</b>	130.1(a)	Local switch	Readily accessible device(s) to control lighting within an enclosed space.
	130.1(c)5	Vacancy sensor (Manual On - Auto Off) Automatic Full-Off Occupancy Sensor with Partial On to 70%	Automatically shuts off lighting power after vacancy of 20 minutes or less.
<b>LIGHT LEVEL CONTROL</b>	130.1(b)	Multi-level lighting controls	At least one multi-level lighting control device (manual or automatic) in enclosed areas 100 sq. ft. or larger. Light level requirements are defined in Table 130.1-A. Note, the majority of lighting types require multiple control steps.
	130.1(d) and 140.6(d)	Automatic daylight control	Sensor to reduce lighting in response to available daylight. Daylighting zones defined in Section 130.1(d)1. Primary daylight zones must be controlled separately from secondary zones. Refer to Table 130.1-A for lighting-level requirements.
<b>ADDITIONAL CONTROL</b>	110.12	Demand Response	Automatic lighting reduction by a minimum of 15% of total installed lighting power in response to a Demand Response Signal. Required for new buildings with installed lighting power of 4,000 watts or greater.
	130.5(d)	Receptacle Control	Automatically turn OFF of the receptacles in the space. Install receptacles within 6 feet of each uncontrolled receptacle of the outlets in each receptacle.



**PRIVATE OFFICE ≤ 250 SQ. FT.**

	Code Provision	Minimum Control Type	Requirement
<b>ON/OFF CONTROLS</b>	130.1(a)	Local switch	Readily accessible device(s) to control lighting within an enclosed space.
	130.1(c)5	Vacancy sensor (Manual On - Auto Off) Automatic Full-Off Occupancy Sensor with Partial On to 70%	Automatically shuts off lighting power after vacancy of 20 minutes or less.
<b>LIGHT LEVEL CONTROL</b>	130.1(b)	Multi-level lighting controls	At least one multi-level lighting control device (manual or automatic) in enclosed areas 100 sq. ft. or larger. Light level requirements are defined in Table 130.1-A. Note, the majority of lighting types require multiple control steps.
	130.1(d) and 140.6(d)	Automatic daylight control	Sensor to reduce lighting in response to available daylight. Daylighting zones defined in Section 130.1(d)1. Primary daylight zones must be controlled separately from secondary zones. Refer to Table 130.1-A for lighting-level requirements.
<b>ADDITIONAL CONTROL</b>	130.4	Acceptance testing (functional testing)	Testing shall ensure that control hardware and software are calibrated, programmed, and functioning properly.
	130.1(e)	Demand Response	Automatic lighting reduction by a minimum of 15% of total installed lighting power in response to a Demand Response Signal. Required for new buildings with installed lighting power of 4,000 watts or greater
	130.5(d)	Receptacle Control	Automatically turn OFF of the receptacles in the space. Install receptacle within 6 feet of each uncontrolled receptacle or 50% of the outlets in each receptacle.

**OPEN OFFICE > 250 SQ. FT.**

	Code Provision	Minimum Control Type	Requirement
<b>ON/OFF CONTROLS</b>	130.1(a)	Local switch	Readily accessible device(s) to control lighting within an enclosed space.
	130.1(c)1	Programmable Timeclock	Scheduled time-of-day operated control that turns lighting off at specified times when typically unoccupied. Occupancy sensors or other building system signals that turn Off lights during vacancy also comply. Maximum 2 hour manual override.
	130.1(c)5	Vacancy sensor (Manual On - Auto Off): Partial On (50-70% On - Full Off)	Automatically shuts off lighting power after vacancy of 20 minutes or less.
<b>LIGHT LEVEL CONTROL</b>	130.1(b)	Multi-level lighting controls	At least one multi-level lighting control device (manual or automatic) in enclosed areas 100 sq. ft. or larger. Light level requirements are defined in Table 130.1-A. Note, the majority of lighting types require multiple control steps.
	130.1(d) and 140.6(d)	Automatic daylight control	Sensor to reduce lighting in response to available daylight. Daylighting zones defined in Section 130.1(d)1. Primary daylight zones must be controlled separately from secondary zones. Refer to Table 130.1-A for lighting-level requirements.
<b>ADDITIONAL CONTROL</b>	130.4	Acceptance testing (functional testing)	Testing shall ensure that control hardware and software are calibrated, programmed, and functioning properly.
	130.1(e)	Demand Response	Automatic lighting reduction by a minimum of 15% of total installed lighting power in response to a Demand Response Signal. Required for new buildings with installed lighting power of 4,000 watts or greater
	130.5(d)	Receptacle Control	Automatically turn OFF of the receptacles in the space. Install receptacle within 6 feet of each uncontrolled receptacle or 50% of the outlets in each receptacle.
	130.5(d)	Receptacle Control	Automatically turn OFF of the receptacles in the space. Install receptacle within 6 feet of each uncontrolled receptacle or 50% of the outlets in each receptacle.



**CORRIDOR**

	Code Provision	Minimum Control Type	Requirement
<b>ON/OFF CONTROLS</b>	130.1(a)	Local switch	May use a manual control not accessible to unauthorized personnel
	130.1(c)5	Automatic Partial OFF	Automatically reduces lighting power in any one controlled zone by at least 50% after vacancy of 20 minutes or less.
<b>LIGHT LEVEL CONTROL</b>	130.1(b)	Multi-level lighting controls	At least one multi-level lighting control device (manual or automatic) in enclosed areas 100 sq. ft. or larger. Light level requirements are defined in Table 130.1-A. Note, the majority of lighting types require multiple control steps.
	130.1(d) and 140.6(d)	Automatic daylight control	Sensor to reduce lighting in response to available daylight. Daylighting zones defined in Section 130.1(d)1. Primary daylight zones must be controlled separately from secondary zones. Refer to Table 130.1-A for lighting-level requirements.
<b>ADDITIONAL CONTROL</b>	130.4	Acceptance testing (functional testing)	Testing shall ensure that control hardware and software are calibrated, programmed, and functioning properly.
	130.1(e)	Demand Response	Automatic lighting reduction by a minimum of 15% of total installed lighting power in response to a Demand Response Signal. Required for new buildings with installed lighting power of 4,000 watts or greater

**RESTROOM**

	Code Provision	Minimum Control Type	Requirement
<b>ON/OFF CONTROLS</b>	130.1(a)	Local switch	May use a manual control not accessible to unauthorized personnel
	130.1(c)5	Automatic Partial OFF	Automatically reduces lighting power in any one controlled zone by at least 50% after vacancy of 20 minutes or less.
<b>LIGHT LEVEL CONTROL</b>	130.1(b)	Multi-level lighting controls	At least one multi-level lighting control device (manual or automatic) in enclosed areas 100 sq. ft. or larger. Light level requirements are defined in Table 130.1-A. Note, the majority of lighting types require multiple control steps.
	130.1(d) and 140.6(d)	Automatic daylight control	Sensor to reduce lighting in response to available daylight. Daylighting zones defined in Section 130.1(d)1. Primary daylight zones must be controlled separately from secondary zones. Refer to Table 130.1-A for lighting-level requirements.
<b>ADDITIONAL CONTROL</b>	130.4	Acceptance testing (functional testing)	Testing shall ensure that control hardware and software are calibrated, programmed, and functioning properly.
	130.1(e)	Demand Response	Automatic lighting reduction by a minimum of 15% of total installed lighting power in response to a Demand Response Signal. Required for new buildings with installed lighting power of 4,000 watts or greater



**STAIRWELL**

	Code Provision	Minimum Control Type	Requirement
<b>ON/OFF CONTROLS</b>	130.1(a)	Local switch	May use a manual control not accessible to unauthorized personnel
	130.1(c)6 & 7	Automatic Partial OFF	Automatically reduces lighting power in any one controlled zone by at least 50% after vacancy of 20 minutes or less.
<b>LIGHT LEVEL CONTROL</b>	130.1(b)	Multi-level lighting controls	At least one multi-level lighting control device (manual or automatic) in enclosed areas 100 sq. ft. or larger. Light level requirements are defined in Table 130.1-A. Note, the majority of lighting types require multiple control steps.
	130.1(d) and 140.6(d)	Automatic daylight control	Sensor to reduce lighting in response to available daylight. Daylighting zones defined in Section 130.1(d)1. Primary daylight zones must be controlled separately from secondary zones. Refer to Table 130.1-A for lighting-level requirements.
<b>ADDITIONAL CONTROL</b>	130.4	Acceptance testing (functional testing)	Testing shall ensure that control hardware and software are calibrated, programmed, and functioning properly.
	130.1(e)	Demand Response	Automatic lighting reduction by a minimum of 15% of total installed lighting power in response to a Demand Response Signal. Required for new buildings with installed lighting power of 4,000 watts or greater

**STORAGE ROOM**

	Code Provision	Minimum Control Type	Requirement
<b>ON/OFF CONTROLS</b>	130.1(a)	Local switch	Readily accessible device(s) to control lighting within an enclosed space.
	130.1(c)1	Programmable Timeclock	Scheduled time-of-day operated control that turns lighting off at specified times when typically unoccupied. Occupancy sensors or other building system signals that turn OFF lights during vacancy also comply. Maximum 2 hour manual override.
	130.1(c)5	Vacancy sensor (Manual On - Auto Off): Partial On (50-70% On - Full Off)	Automatically shuts off lighting power after vacancy of 20 minutes or less.
<b>LIGHT LEVEL CONTROL</b>	130.1(b)	Multi-level lighting controls	At least one multi-level lighting control device (manual or automatic) in enclosed areas 100 sq. ft. or larger. Light level requirements are defined in Table 130.1-A. Note, the majority of lighting types require multiple control steps.
	130.1(d) and 140.6(d)	Automatic daylight control	Sensor to reduce lighting in response to available daylight. Daylighting zones defined in Section 130.1(d)1. Primary daylight zones must be controlled separately from secondary zones. Refer to Table 130.1-A for lighting-level requirements.
<b>ADDITIONAL CONTROL</b>	130.4	Acceptance testing (functional testing)	Testing shall ensure that control hardware and software are calibrated, programmed, and functioning properly.
	130.1(e)	Demand Response	Automatic lighting reduction by a minimum of 15% of total installed lighting power in response to a Demand Response Signal. Required for new buildings with installed lighting power of 4,000 watts or greater

APPLICATION TYPE

TYPE OF SOLUTION (WIRED OR WIRELESS)

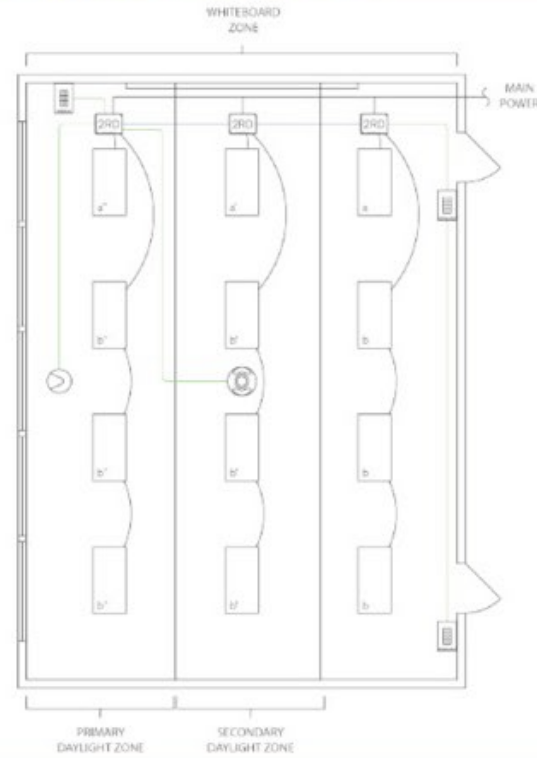
CLASSROOM WITH WINDOWS AND DAYLIGHTING ZONE - WIRED

CLASSROOM WITH WINDOWS AND DAYLIGHTING ZONE - WIRELESS

PRODUCT LAYOUT AND HOW THEY'RE CONNECTED



Note: Drawings not shown to scale and are intended as illustrative example of the application.



WHAT PRODUCTS ARE USED IN THE SPACE

BEST PRACTICE LAYOUT

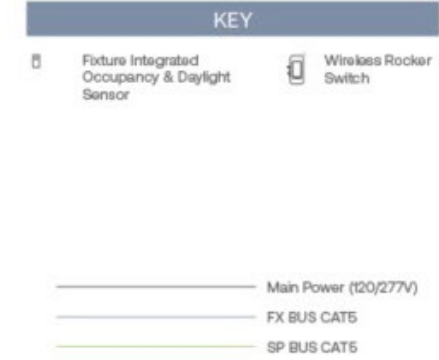
- For optimal performance, the daylight sensor should be mounted near the window aperture and aligned to the middle of the opening for accurate measurement.
- ORLO switch stations should be located near each entrance to the space, and scene control switch should be located near the front of the classroom at teacher station for convenient adjustment of lighting levels during instruction.
- Ensure proper placement of occupancy sensors in space, keeping clear of any obstructions.
- Space can be networked back to an Area Controller for BMS integration or networked Automated Demand Response with only a few additional components, please see networking page for additional details.

BILL OF MATERIALS

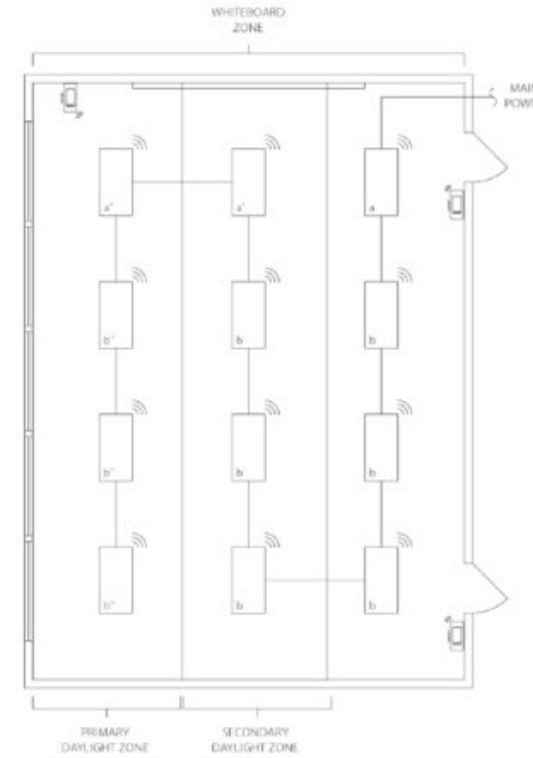
QTY.	Catalog #	Description
3	NXRFX2-2RD-UNV	Room Controller with 2 Relays & 0-10V Dimming Outputs
1	NXSMDT-OMNI	Dual Technology Ceiling Mounted Occupancy Sensor
1	NXDS	Multi-Zone Daylight Sensor
1	NXSW2-SS	Scene Switch Specialty Switch
2	NXSW2-ORLO	On/Raise/Lower/Off Specialty Switch

OPERATIONAL DESCRIPTION

- 0-10V Dimming
- 2 Manual control groups - front of class and general lighting
- Auto ON to 50-70% upon occupancy, or manual ON
- Auto OFF after period of vacancy ≤ 20min
- Manual On/Off/Raise/Lower control of fixtures
- Scene switch at teacher station for recall of presets and manual Raise/Lower control
- Ceiling mounted daylight sensor for multi-zone daylight harvesting capability where required [Exceptions: spaces with <24ft² of glazing or if lighting load is <120W combined in skylit and primary sidelit zones]



Note: Drawings not shown to scale and are intended as illustrative example of the application.



GUIDELINES TO FOLLOW WHEN LAYING OUT THE SYSTEM

BEST PRACTICE LAYOUT

- Fixture integrated NX sensors can be used for both occupancy sensing and daylight harvesting when required.
- Switch stations should be located near each entrance to space and teacher's station for convenient access.
- Space can be networked back to an Area Controller for BMS integration or networked Automated Demand Response with only a few additional components, please see networking page for additional details.

BILL OF MATERIALS

QTY.	Catalog#	Description
4	NXSW-WRS-WH	Battery-Operated Wireless Rocker Switch
12	NXWSM*	NX Enabled Current Fixture with Integral Wireless Occupancy/Daylight Sensor

\* See Integrated Control Options for Indoor Luminaires Ordering Logic and Description on pg. 54 for additional details.

OPERATIONAL DESCRIPTION

- 0-10V Dimming
- Auto ON to 50-70% upon occupancy, or manual ON
- Auto OFF after period of vacancy ≤ 20min
- Manual On/Off/Raise/Lower control of each group of fixtures
- Integral daylight sensor in fixtures for daylight harvesting capability where required [Exceptions: spaces with <24ft² of glazing or if lighting load is <120W combined in skylit and primary sidelit zones]

HOW THE SPACE FUNCTIONS



### PRIVATE OFFICE ≤ 250FT<sup>2</sup> WITH WINDOWS - WIRED

### PRIVATE OFFICE ≤ 250FT<sup>2</sup> WITH WINDOWS - WIRELESS

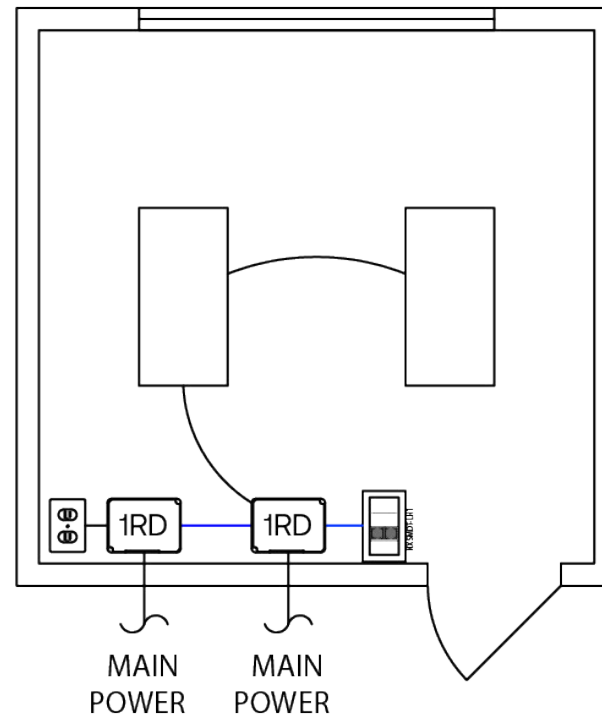


#### KEY

- 1RD Room Controller
- Dual Technology Wall Switch Occupancy Sensor
- Controlled Receptacle

— Main Power (120/277V)  
 — FX BUS CAT5

*Note: Drawings not shown to scale and are intended as illustrative example of the application.*

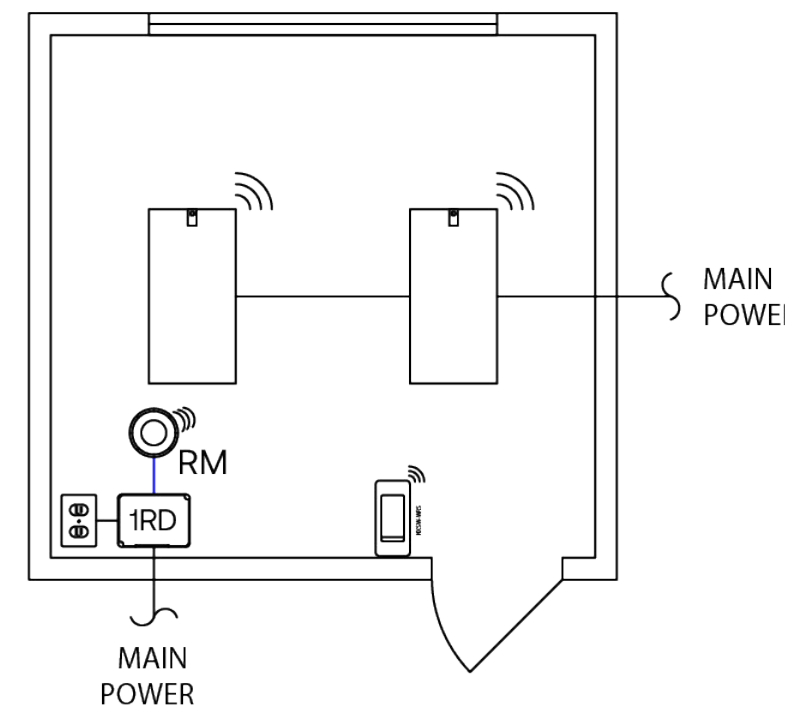


#### KEY

- 1RD Room Controller
- Radio Module
- Controlled Receptacle
- Wireless Rocker Switch
- Fixture Integrated Occupancy & Daylight Sensor

— Main Power (120/277V)  
 — FX BUS CAT5

*Note: Drawings not shown to scale and are intended as illustrative example of the application.*



#### BEST PRACTICE LAYOUT

- NX LightHAWK can be used for occupancy sensing, daylight harvesting, as well as manual on/raise/lower/off control of lighting load in space
- Space can be networked back to an Area Controller for BMS integration or networked Automated Demand Response with only a few additional components, please see networking page for additional details

#### BILL OF MATERIALS

QTY.	Catalog #	Description
1	NXSMDT-LH1	Dual Technology Wall Switch Occupancy Sensor
2	NXRCFX2-1RD-UNV	Room Controller with 1 Relay & 0-10V Dimming Output

#### OPERATIONAL DESCRIPTION

- 0-10V Dimmable fixtures
- Auto ON to 50-70% upon occupancy
- Auto OFF after period of vacancy ≤ 20min
- Manual On/Off/Raise/Lower control of fixtures
- Plug load auto ON based on occupancy, and auto OFF after period of vacancy ≤ 20min
- Integral daylight sensor in LightHAWK for daylight harvesting where required (Exceptions: spaces with <24ft<sup>2</sup> of glazing or if lighting load is <120W combined in skylit and primary sidelit zones)

#### BILL OF MATERIALS

QTY.	Catalog #	Description
1	NXSW-WRS-WH	Battery-Operated Wireless Rocker Switch
1	NXRFX2-1RD-UNV	Room Controller with 1 Relay & 0-10V Dimming Output
1	NXRM2-H	Radio Module
2	NXWSM*	NX Enabled Current Fixture with Integral Wireless Occupancy/Daylight Sensor

\* See Integrated Control Options for Indoor Luminaires Ordering Logic and Description on pg. 54 for additional details

#### OPERATIONAL DESCRIPTION

- 0-10V Dimmable fixtures
- Auto ON to 50-70% upon occupancy
- Auto OFF after period of vacancy ≤ 20min
- Manual On/Off/Raise/Lower control of fixtures
- Plug load auto ON based on occupancy, and auto OFF after period of vacancy ≤ 20min
- Integral daylight sensor in fixtures for daylight harvesting where required (Exceptions: spaces with <24ft<sup>2</sup> of glazing or if lighting load is <120W combined in skylit and primary sidelit zones)

#### BEST PRACTICE LAYOUT

- Fixture integrated NX sensors can be used for both occupancy sensing and daylight harvesting when required
- For indoor spaces, place radios within 100' line of sight of at least two other wireless devices
- Space can be networked back to an Area Controller for BMS integration or networked Automated Demand Response with only a few additional components, please see networking page for additional details

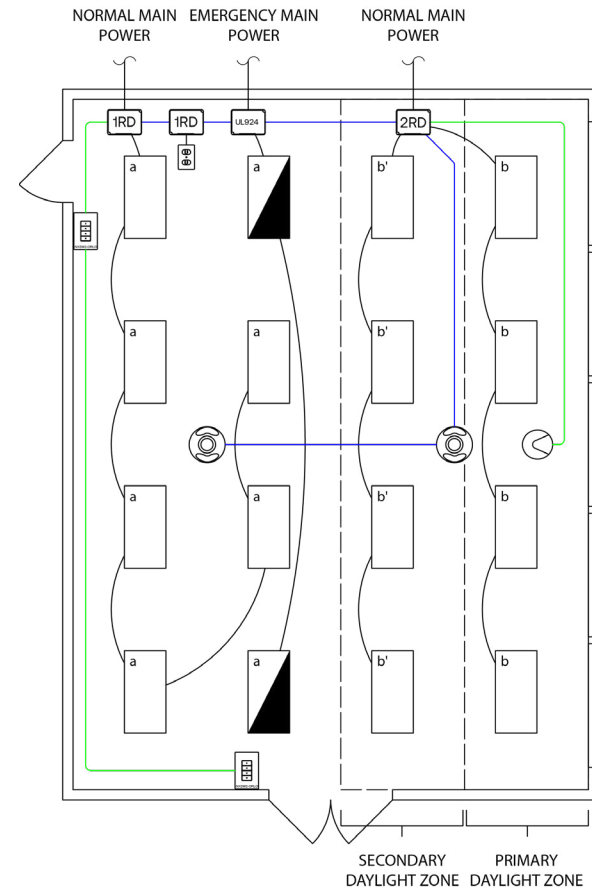
OPEN OFFICE >250FT<sup>2</sup> WITH WINDOWS AND DAYLIGHTING ZONE - WIRED

OPEN OFFICE >250FT<sup>2</sup> WITH WINDOWS AND DAYLIGHTING ZONE - WIRELESS

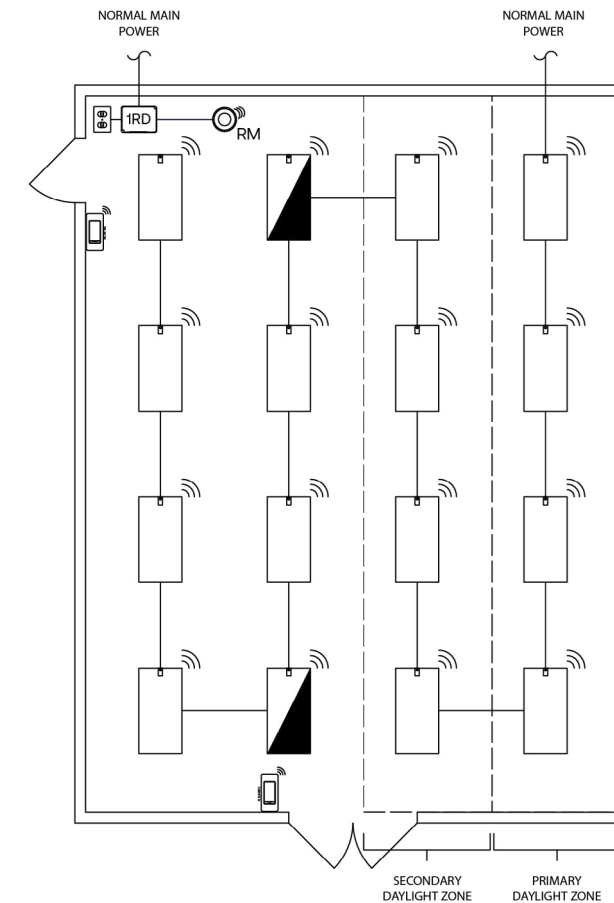


KEY

- 1RD Room Controller
- ORLO Switch
- 2RD Room Controller
- Controlled Receptacle
- UL924 Room Controller
- Dual Technology Ceiling Mounted Occupancy Sensor
- Multi-Zone Daylight Sensor
- Main Power (120/277V)
- FX BUS CAT5
- SP BUS CAT5



Note: Drawings not shown to scale and are intended as illustrative example of the application.



Wiring shown assumes emergency fixtures ordered with integral battery backup. Please see fixture spec sheet for details on ordering options.

KEY

- 1RD Room Controller
- Radio Module
- Wireless Rocker Switch
- Fixture Integrated Occupancy & Daylight Sensor
- Controlled Receptacle
- Main Power (120/277V)
- FX BUS CAT5

Note: Drawings not shown to scale and are intended as illustrative example of the application.

BEST PRACTICE LAYOUT

- For optimal performance, the daylight sensor should be mounted near the window aperture and aligned to the middle of the opening for accurate measurement
- Switch stations should be located near each entrance to the space
- Each occupancy control zone shall not exceed 600 ft<sup>2</sup>
- Ensure proper placement of occupancy sensors in space, keeping clear of any obstructions
- Space can be networked back to an Area Controller for BMS integration or networked Automated Demand Response with only a few additional components, please see networking page for additional details

BILL OF MATERIALS

QTY.	Catalog #	Description
2	NXRFX2-1RD-UNV	Room Controller with 1 Relay & 0-10V Dimming Output
2	NXSW2-ORLO	On/Raise/Lower/Off Specialty Switch
1	NXRFX2-2RD-UNV	Room Controller with 2 Relays & 0-10V Dimming Outputs
2	NXSMDT-OMNI	Dual Technology Ceiling Mounted Occupancy Sensor
1	NXDS	Multi-Zone Daylight Sensor
1	NXRC-UL924-UNV	Emergency Room Controller with 1 Relay & (2) 0-10V Dimming Outputs

OPERATIONAL DESCRIPTION

- 0-10V Dimmable fixtures
- Auto ON to 50-70% upon occupancy for each occupancy control zone not exceeding 600ft<sup>2</sup>
- Auto OFF after period of vacancy ≤ 20min for each occupancy zone
- Manual On/Off/Raise/Lower control of fixtures
- Plug load auto ON based on occupancy, and auto OFF after period of vacancy ≤ 20min
- Ceiling mounted daylight sensor for multi-zone daylight harvesting capability where required (Exceptions: spaces with <24ft<sup>2</sup> of glazing or if lighting load is <120W combined in skylit and primary sidelit zones)
- Integral timeclock in room controllers can also be utilized for standalone scheduled time-of-day operation of space with manual override switch

BILL OF MATERIALS

QTY.	Catalog #	Description
1	NXRFX2-1RD-UNV	Room Controller with 1 Relay & 0-10V Dimming Output
1	NXRM2-H	Radio Module
2	NXSW-WRS-WH	Battery-Operated Wireless Rocker Switch
16	NXWSM*	NX Enabled Current Fixture with Integral Wireless Occupancy/Daylight Sensor

\*See Integrated Control Options for Indoor Luminaires Ordering Logic and Description on pg. 54 for additional details

OPERATIONAL DESCRIPTION

- 0-10V Dimmable fixtures
- Auto ON to 50-70% upon occupancy for each occupancy control zone not exceeding 600ft<sup>2</sup>
- Auto OFF after period of vacancy ≤ 20min for each occupancy zone
- Manual On/Off/Raise/Lower control of fixtures
- Plug load auto ON based on occupancy, auto OFF after period of vacancy ≤ 20min
- Integral daylight sensor in fixtures for daylight harvesting where required (Exceptions: spaces with <24ft<sup>2</sup> of glazing or if lighting load is <120W combined in skylit and primary sidelit zones)
- Integral timeclock in NX enabled luminaires can also be utilized for standalone scheduled time-of-day operation of space with manual override switch and occupancy sensors and occupancy sensors

BEST PRACTICE LAYOUT

- Fixture integrated NX sensors can be used for both occupancy sensing and daylight harvesting when required
- For indoor spaces, place radios within 100' line of sight of at least two other wireless devices
- Switch stations should be located near each entrance to the space
- Each occupancy control zone shall not exceed 600 ft<sup>2</sup>
- Space can be networked back to an Area Controller for BMS integration or networked Automated Demand Response with only a few additional components, please see networking page for additional details



### CONFERENCE ROOM - WIRED

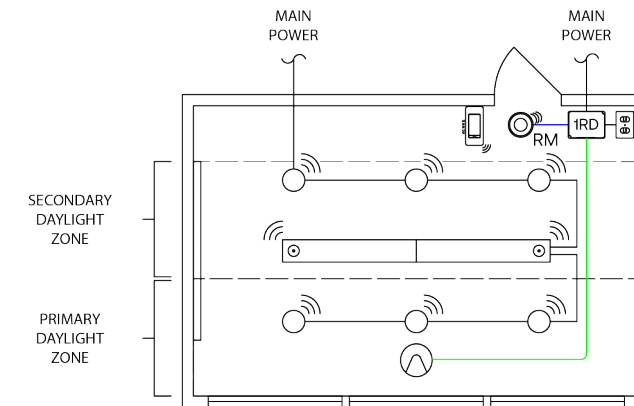
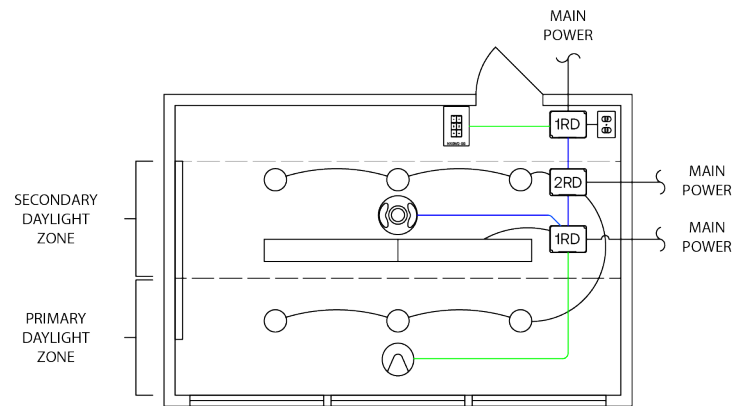
### CONFERENCE ROOM - WIRELESS



**KEY**

- 2RD Room Controller
- 1RD Room Controller
- Multi-Zone Daylight Sensor
- Controlled Receptacle
- Scene Switch
- Dual Technology Ceiling Mounted Occupancy Sensor

Main Power (120/277V)  
 FX BUS CAT5  
 SP BUS CAT5



**KEY**

- Multi-Zone Daylight Sensor
- 1RD Room Controller
- Wireless Rocker Switch
- Controlled Receptacle
- Radio Module
- Fixture Integrated Occupancy & Daylight Sensor

Main Power (120/277V)  
 FX BUS CAT5  
 SP BUS CAT5

Note: Drawings not shown to scale and are intended as illustrative example of the application.

Note: Drawings not shown to scale and are intended as illustrative example of the application.

#### BEST PRACTICE LAYOUT

- For optimal performance, the daylight sensor should be mounted near the window aperture and aligned to the middle of the opening for accurate measurement
- Switch stations should be located near each entrance to the space
- Ensure proper placement of occupancy sensors in space, keeping clear of any obstructions
- Space can be networked back to an Area Controller for BMS integration or networked Automated Demand Response with only a few additional components, please see networking page for additional details

BILL OF MATERIALS		
QTY.	Catalog #	Description
2	NXRCFX2-1RD-UNV	Room Controller with 1 Relay & 0-10V Dimming Output
1	NXSW2-SS	Scene Switch Specialty Switch
1	NXRCFX2-2RD-UNV	Room Controller with 2 Relays & 0-10V Dimming Outputs
1	NXSMDT-OMNI	Dual Technology Ceiling Mounted Occupancy Sensor
1	NXDS	Multi-Zone Daylight Sensor

#### OPERATIONAL DESCRIPTION

- 0-10V Dimmable fixtures
- Auto ON to 50-70% upon occupancy, or manual ON
- Auto OFF after period of vacancy ≤20min
- Scene switch for recalling programmed presets and manual Raise/Lower of activated scene
- Plug load auto ON based on occupancy, and auto OFF after period of vacancy ≤20min
- Ceiling mounted daylight sensor for multi-zone daylight harvesting where required (Exceptions: spaces with <24ft<sup>2</sup> of glazing or if lighting load is <120W combined in skylit and primary sidelit zones)

#### BILL OF MATERIALS

QTY.	Catalog #	Description
1	NXRCFX2-1RD-UNV	Room Controller with 1 Relay & 0-10V Dimming Output
1	NXRM2-H	Radio Module
1	NXSW-WRS-WH	Battery-Operated Wireless Rocker Switch
1	NXDS	Multi-Zone Daylight Sensor
2	NXWRM*	NX Enabled Current Fixture with Integral Wireless Occupancy/Daylight Sensor

\* See Integrated Control Options for Indoor Luminaires Ordering Logic and Description on pg. 54 for additional details.

#### OPERATIONAL DESCRIPTION

- 0-10V Dimmable fixtures
- Auto ON to 50-70% upon occupancy, or manual ON
- Auto OFF after period of vacancy ≤20min
- Scene switch for recalling programmed presets and manual Raise/Lower of activated scene
- Plug load auto ON based on occupancy, and auto OFF after period of vacancy ≤20min
- Ceiling mounted daylight sensor for multi-zone daylight harvesting where required (Exceptions: spaces with <24ft<sup>2</sup> of glazing or if lighting load is <120W combined in skylit and primary sidelit zones)

#### BEST PRACTICE LAYOUT

- For optimal performance, the daylight sensor should be mounted near the window aperture and aligned to the middle of the opening for accurate measurement
- Switch stations should be located near each entrance to the space
- Space can be networked back to an Area Controller for BMS integration or networked Automated Demand Response with only a few additional components, please see networking page for additional details
- For indoor spaces, place radios within 100' line of sight of at least two other wireless devices

CLASSROOM WITH WINDOWS AND DAYLIGHTING ZONE - WIRED

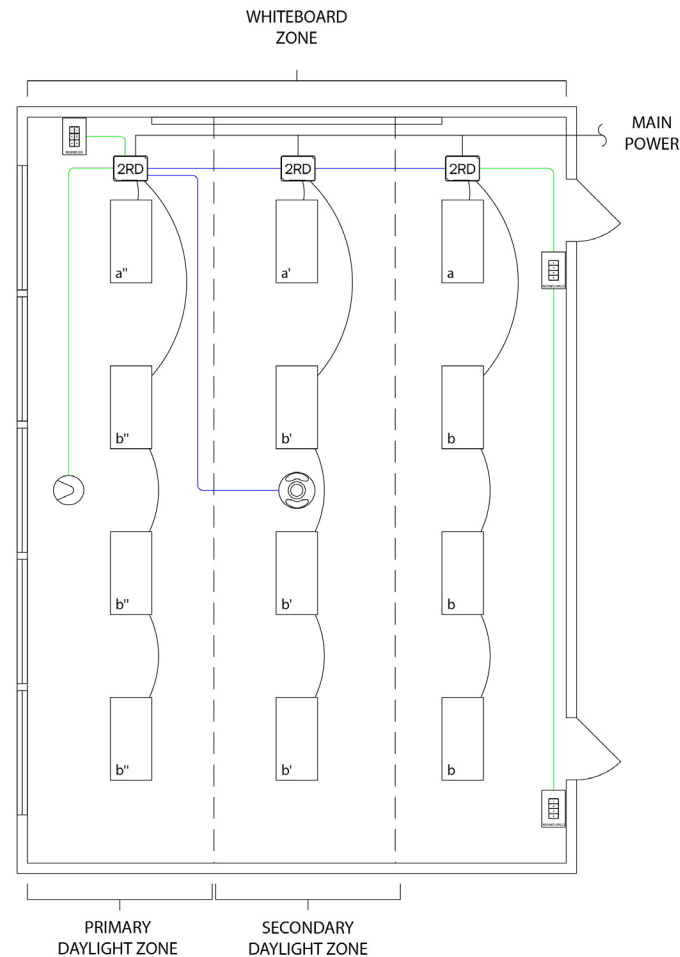
CLASSROOM WITH WINDOWS AND DAYLIGHTING ZONE - WIRELESS



KEY

- 2RD Room Controller
  - Scene Switch
  - Dual Technology Ceiling Mounted Occupancy Sensor
  - ORLO Switch
  - Multi-Zone Daylight Sensor
- Main Power (120/277V)  
 FX BUS CAT5  
 SP BUS CAT5

Note: Drawings not shown to scale and are intended as illustrative example of the application.

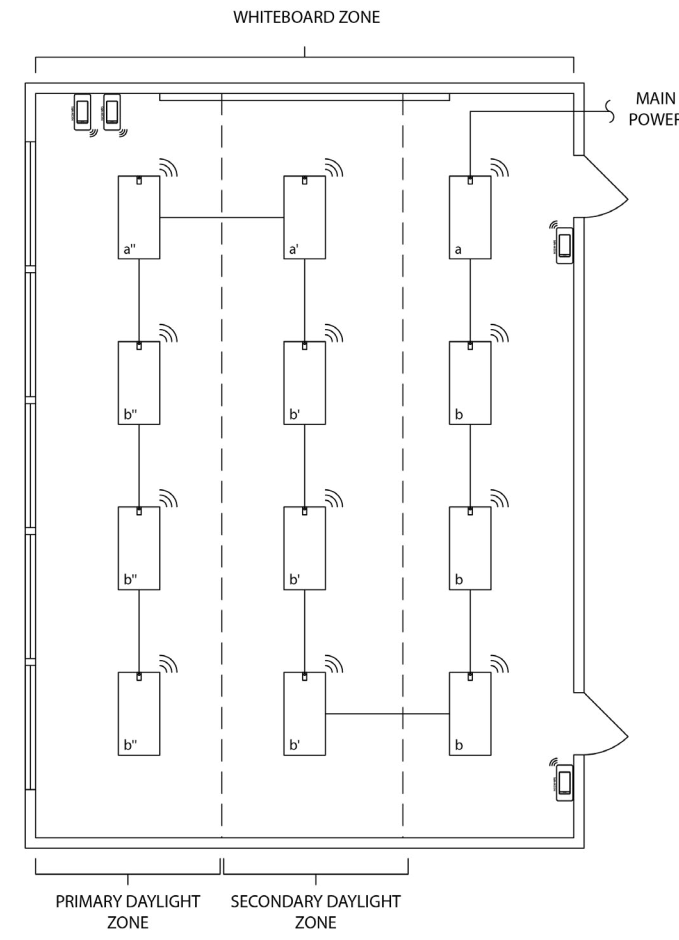


BILL OF MATERIALS

QTY.	Catalog #	Description
3	NXRCFX2-2RD-UNV	Room Controller with 2 Relays & 0-10V Dimming Outputs
1	NXSMDT-OMNI	Dual Technology Ceiling Mounted Occupancy Sensor
1	NXDS	Multi-Zone Daylight Sensor
1	NXSW2-SS	Scene Switch Specialty Switch
2	NXSW2-ORLO	On/Raise/Lower/Off Specialty Switch

OPERATIONAL DESCRIPTION

- 0-10V Dimming
- 2 Manual control groups - front of class and general lighting
- Auto ON to 50-70% upon occupancy, or manual ON
- Auto OFF after period of vacancy ≤ 20min
- Manual On/Off/Raise/Lower control of fixtures
- Scene switch at teacher station for recall of presets and manual Raise/Lower control
- Ceiling mounted daylight sensor for multi-zone daylight harvesting capability where required (Exceptions: spaces with <24ft<sup>2</sup> of glazing or if lighting load is <120W combined in skylit and primary sidelit zones)



BILL OF MATERIALS

QTY.	Catalog#	Description
4	NXSW-WRS-WH	Battery-Operated Wireless Rocker Switch
12	NXWSM*	NX Enabled Current Fixture with Integral Wireless Occupancy/Daylight Sensor

\* See Integrated Control Options for Indoor Luminaires Ordering Logic and Description on pg. 54 for additional details.

OPERATIONAL DESCRIPTION

- 0-10V Dimming
- Auto ON to 50-70% upon occupancy, or manual ON
- Auto OFF after period of vacancy ≤ 20min
- Manual On/Off/Raise/Lower control of each group of fixtures
- Integral daylight sensor in fixtures for daylight harvesting capability where required (Exceptions: spaces with <24ft<sup>2</sup> of glazing or if lighting load is <120W combined in skylit and primary sidelit zones)

KEY

- Fixture Integrated Occupancy & Daylight Sensor
  - Wireless Rocker Switch
- Main Power (120/277V)

Note: Drawings not shown to scale and are intended as illustrative example of the application.

BEST PRACTICE LAYOUT

- For optimal performance, the daylight sensor should be mounted near the window aperture and aligned to the middle of the opening for accurate measurement
- ORLO switch stations should be located near each entrance to the space, and scene control switch should be located near the front of the classroom at teacher station for convenient adjustment of lighting levels during instruction
- Ensure proper placement of occupancy sensors in space, keeping clear of any obstructions
- Space can be networked back to an Area Controller for BMS integration or networked Automated Demand Response with only a few additional components, please see networking page for additional details

BEST PRACTICE LAYOUT

- Fixture integrated NX sensors can be used for both occupancy sensing and daylight harvesting when required
- Switch stations should be located near each entrance to space and teacher's station for convenient access
- Space can be networked back to an Area Controller for BMS integration or networked Automated Demand Response with only a few additional components, please see networking page for additional details



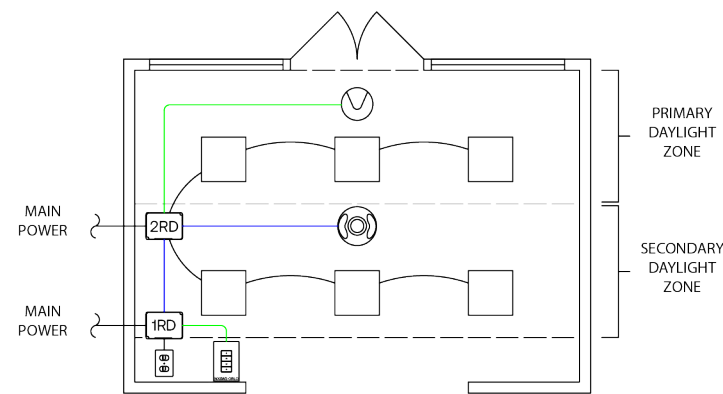
### LOBBY - WIRED

### LOBBY - WIRELESS



#### KEY

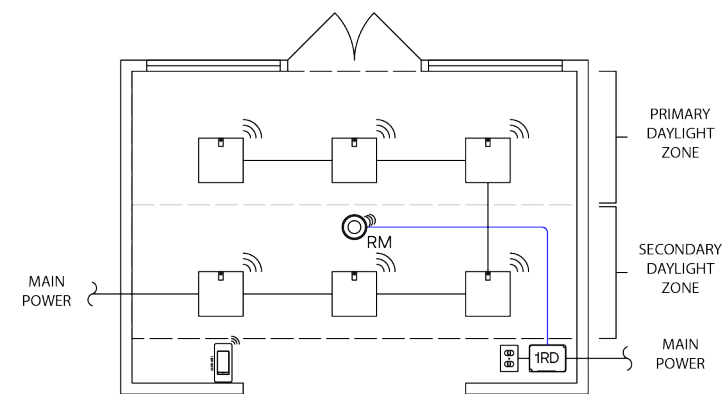
- Multi-Zone Daylight Sensor
- Dual Technology Ceiling Mounted Occupancy Sensor
- 1RD Room Controller
- ORLO Switch
- 2RD Room Controller
- Controlled Receptacle
- Main Power (120/277V)
- FX BUS CAT5
- SP BUS CAT5



Note: Drawings not shown to scale and are intended as illustrative example of the application.

#### KEY

- 1RD Room Controller
- Radio Module
- Controlled Receptacle
- Fixture Integrated Occupancy & Daylight Sensor
- Wireless Rocker Switch
- Main Power (120/277V)
- FX BUS CAT5



Note: Drawings not shown to scale and are intended as illustrative example of the application.

#### BEST PRACTICE LAYOUT

- For optimal performance, the daylight sensor should be mounted near the window aperture and aligned to the middle of the opening for accurate measurement
- Switch stations should be located near each entrance to the space
- Ensure proper placement of occupancy sensors in space, keeping clear of any obstructions
- Space can be networked back to an Area Controller for BMS integration or networked Automated Demand Response with only a few additional components, please see networking page for additional details

#### BILL OF MATERIALS

QTY.	Catalog #	Description
1	NXRCFX2-1RD-UNV	Room Controller with 1 Relay & 0-10V Dimming Output
1	NXRCFX2-2RD-UNV	Room Controller with 2 Relays & 0-10V Dimming Outputs
1	NXSMDT-OMNI	Dual Technology Ceiling Mounted Occupancy Sensor
1	NXSW2-ORLO	On/Raise/Lower/Off Specialty Switch
1	NXDS	Multi-Zone Daylight Sensor

#### OPERATIONAL DESCRIPTION

- 0-10V Dimmable fixtures
- Auto ON to 50-70% upon occupancy, or manual ON
- Auto OFF after period of vacancy ≤20min
- Manual On/Off/Raise/Lower control of fixtures
- Plug load auto ON based on occupancy, and auto OFF after period of vacancy ≤20min
- Ceiling mounted daylight sensor for multi-zone daylight harvesting capability where required (Exceptions: spaces with <24ft<sup>2</sup> of glazing or if lighting load is <120W combined in skylit and primary sidelit zones)
- Integral timeclock in room controllers can also be utilized for standalone scheduled time-of-day operation of space with manual override switch and occupancy sensors

#### BILL OF MATERIALS

QTY.	Catalog #	Description
1	NXRCFX2-1RD-UNV	Room Controller with 1 Relay & 0-10V Dimming Output
1	NXRM2-H	Radio Module
1	NXSW-WRS-WH	Battery-Operated Wireless Rocker Switch
6	NXWSM*	NX Enabled Current Fixture with Integral Wireless Occupancy/Daylight Sensor

\* See Integrated Control Options for Indoor Luminaires Ordering Logic and Description on pg. 54 for additional details.

#### OPERATIONAL DESCRIPTION

- 0-10V Dimmable fixtures
- Auto ON to 50-70% upon occupancy, or manual ON
- Auto OFF after period of vacancy ≤20min
- Manual On/Off/Raise/Lower control of fixtures
- Plug load auto ON based on occupancy, and auto OFF after period of vacancy ≤20min
- Integral daylight sensor in fixtures for daylight harvesting capability where required (Exceptions: spaces with <24ft<sup>2</sup> of glazing or if lighting load is <120W combined in skylit and primary sidelit zones)
- Integral timeclock in NX enabled luminaires can also be utilized for standalone scheduled time-of-day operation of space with manual override switch and occupancy sensors

#### BEST PRACTICE LAYOUT

- Fixture integrated NX sensors can be used for both occupancy sensing and daylight harvesting when required
- For indoor spaces, place radios within 100' line of sight of at least two other wireless devices
- Switch stations should be located near each entrance to the space
- Space can be networked back to an Area Controller for BMS integration or networked Automated Demand Response with only a few additional components, please see networking page for additional details

### CORRIDOR - WIRED

### CORRIDOR - WIRELESS

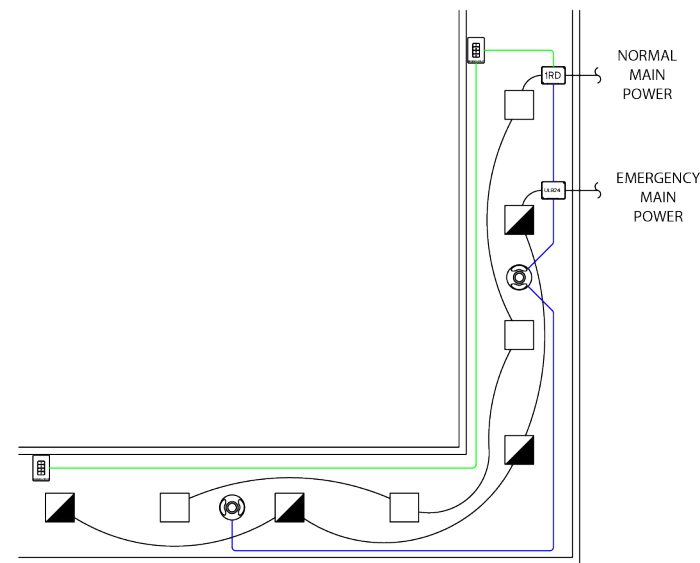


#### KEY

- 1RD Room Controller
- UL924 Room Controller
- Dual Technology Ceiling Mounted Occupancy Sensor
- ORLO Switch

- Main Power (120/277V)
- FX BUS CAT5
- SP BUS CAT5

Note: Drawings not shown to scale and are intended as illustrative example of the application.

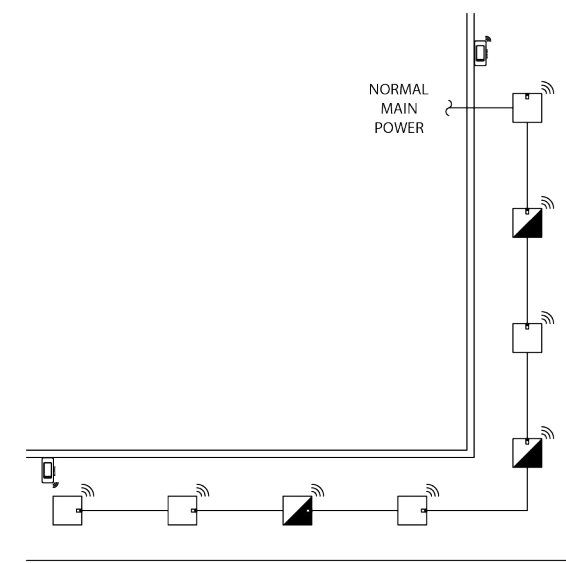


#### KEY

- Wireless Rocker Switch
- Fixture Integrated Occupancy & Daylight Sensor

- Main Power (120/277V)

Note: Drawings not shown to scale and are intended as illustrative example of the application.



Wiring shown assumes emergency fixtures ordered with integral battery backup. Please see fixture spec sheet for details on ordering options.

#### BEST PRACTICE LAYOUT

- Switch stations should be located near each entrance to the space
- Ensure proper placement of occupancy sensors throughout the corridor, keeping clear of any obstructions
- Space can be networked back to an Area Controller for BMS integration or networked Automated Demand Response with only a few additional components, please see networking page for additional details

#### BILL OF MATERIALS

QTY.	Catalog #	Description
1	NXRCFX2-1RD-UNV	Room Controller with 1 Relay & 0-10V Dimming Output
1	NXRC-UL924-UNV	UL924 Emergency Room Controller with 1 Relay & (2) 0-10V Dimming Outputs
2	NXSW2-ORLO	On/Raise/Lower/Off Specialty Switch
2	NXSMDT-OMNI	Dual Technology Ceiling Mounted Occupancy Sensor

#### OPERATIONAL DESCRIPTION

- 0-10V Dimmable fixtures
- Auto full ON upon occupancy
- Partial OFF to ≤50% after period of vacancy ≤ 20min
- Manual On/Off/Raise/Lower control of fixtures
- Integral timeclock in room controllers can also be utilized for standalone scheduled time-of-day operation of space with manual override switch and occupancy sensors

#### BILL OF MATERIALS

QTY.	Catalog #	Description
2	NXSW-WRS-WH	Battery-Operated Wireless Rocker Switch
8	NXWSM*	NX Enabled Current Fixture with Integral Wireless Occupancy/Daylight Sensor

\* See Integrated Control Options for Indoor Luminaires Ordering Logic and Description on pg. 54 for additional details.

#### OPERATIONAL DESCRIPTION

- 0-10V Dimmable fixtures
- Auto full ON upon occupancy
- Partial OFF to ≤50% after period of vacancy ≤ 20min
- Manual On/Off/Raise/Lower control of fixtures
- Integral timeclock in NX enabled luminaires can also be utilized for standalone scheduled time-of-day operation of space with manual override switch and occupancy sensors

#### BEST PRACTICE LAYOUT

- Fixture integrated NX sensors can be used for both occupancy sensing and daylight harvesting when required
- Switch stations should be located near each entrance to the space
- Space can be networked back to an Area Controller for BMS integration or networked Automated Demand Response with only a few additional components, please see networking page for additional details



PUBLIC RESTROOM - WIRED

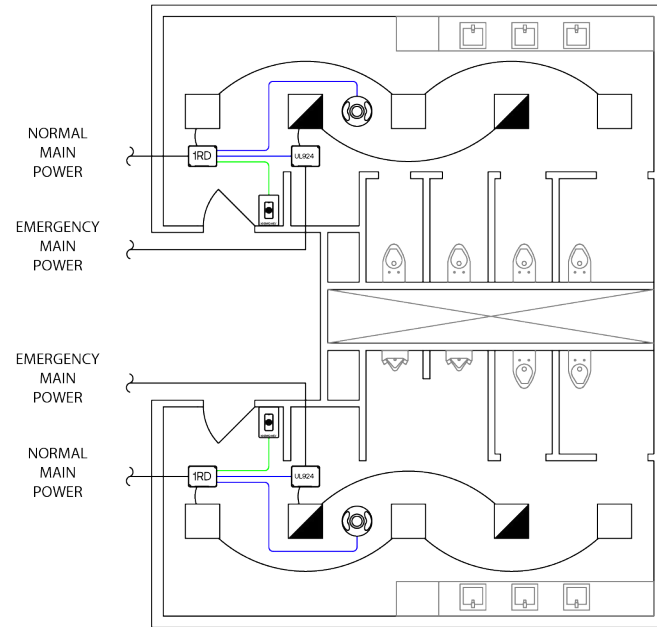
PRIVATE OR SINGLE RESTROOM - WIRED



KEY

- 1RD Room Controller     Key Switch
- UL924 Room Controller     Dual Technology Ceiling Mounted Occupancy Sensor
- Main Power (120/277V)
- FX BUS CAT5
- SP BUS CAT5

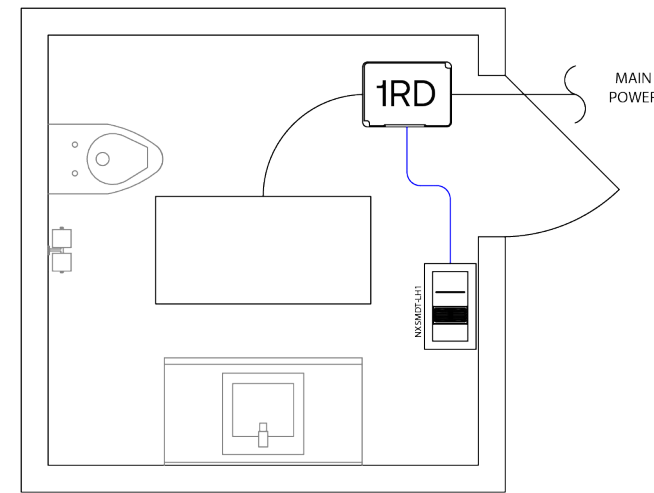
*Note: Drawings not shown to scale and are intended as illustrative example of the application.*



KEY

- 1RD Room Controller     Dual Technology Wall Switch Occupancy Sensor
- Main Power (120/277V)
- FX BUS CAT5

*Note: Drawings not shown to scale and are intended as illustrative example of the application.*



BEST PRACTICE LAYOUT

- Switch stations should be located near each entrance to the space
- Ensure proper placement of occupancy sensors in space, keeping clear of any obstructions
- Space can be networked back to an Area Controller for BMS integration or networked Automated Demand Response with only a few additional components, please see networking page for additional details

BILL OF MATERIALS

QTY.	Catalog #	Description
2	NXRCFX2-1RD-UNV	Room Controller with 1 Relay & 0-10V Dimming Output
2	NXRC-UL924-UNV	UL924 Emergency Room Controller with 1 Relay & (2) 0-10V Dimming Outputs
2	NXSW2-KEY	Digital Key Switch
2	NXSMDT-OMNI	Dual Technology Ceiling Mounted Occupancy Sensor

OPERATIONAL DESCRIPTION

- 0-10V Dimmable fixtures
- Auto ON to 50-70% upon occupancy, or manual ON
- Auto OFF after period of vacancy ≤20min
- Key switch for manual control of fixtures by authorized personnel
- Integral timeclock in room controllers can also be utilized for standalone scheduled time-of-day operation of space with manual override switch and occupancy sensors

BILL OF MATERIALS

QTY.	Catalog #	Description
1	NXSMDT-LH1	Dual Technology Wall Switch Occupancy Sensor
1	NXRCFX2-1RD-UNV	Room Controller with 1 Relay & 0-10V Dimming Output

OPERATIONAL DESCRIPTION

- 0-10V Dimmable fixtures
- Auto ON to 50-70% upon occupancy, or manual ON
- Auto OFF after period of vacancy ≤20min
- Manual On/Off/Raise/Lower control of fixtures

BEST PRACTICE LAYOUT

- NX LightHAWK can be used for occupancy sensing, daylight harvesting, as well as manual on/raise/lower/off control of lighting load in space
- Space can be networked back to an Area Controller for BMS integration or networked Automated Demand Response with only a few additional components, please see networking page for additional details

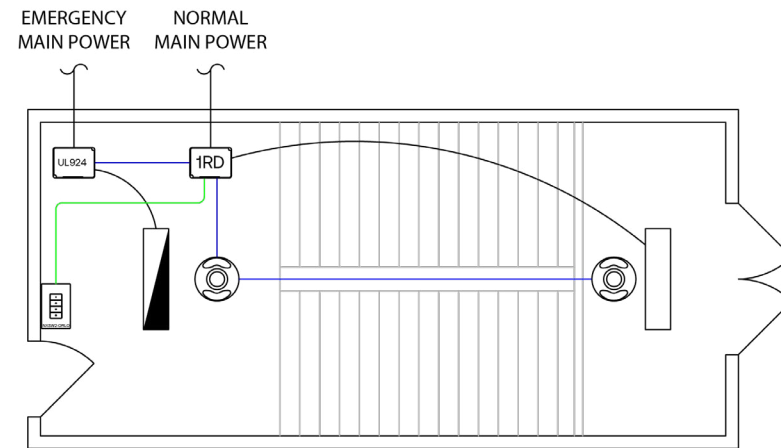
STAIRWELL - WIRED

STAIRWELL - WIRELESS



KEY

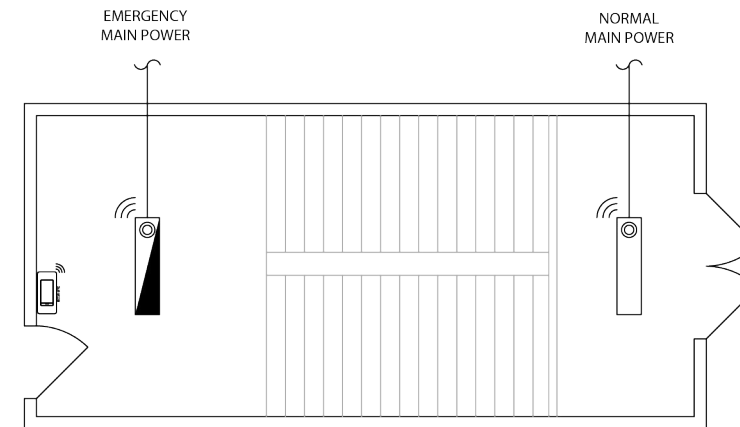
- 1RD Room Controller
- ORLO Switch
- UL924 Room Controller
- Dual Technology Ceiling Mounted Occupancy Sensor
- Main Power (120/277V)
- FX BUS CAT5
- SP BUS CAT5



Note: Drawings not shown to scale and are intended as illustrative example of the application.

KEY

- Wireless Rocker Switch
- Fixture Integrated Occupancy & Daylight Sensor
- Main Power (120/277V)



Note: Drawings not shown to scale and are intended as illustrative example of the application.

Wiring shown assumes emergency fixtures ordered with integral UL924 dimming bypass module. Please see fixture spec sheet for details on ordering options.

BEST PRACTICE LAYOUT

- Switch stations should be located near each entrance to the space
- Ensure proper placement of occupancy sensors throughout the stairwell, keeping clear of any obstructions and taking into account different levels and landings

BILL OF MATERIALS

QTY.	Catalog #	Description
1	NXRFX2-1RD-UNV	Room Controller with 1 Relay & 0-10V Dimming Output
1	NXRC-UL924-UNV	UL924 Emergency Room Controller with 1 Relay & (2) 0-10V Dimming Outputs
1	NXSW2-ORLO	On/Raise/Lower/Off Specialty Switch
2	NXSMDT-OMNI	Dual Technology Ceiling Mounted Occupancy Sensor

OPERATIONAL DESCRIPTION

- 0-10V Dimmable fixtures
- Auto full ON upon occupancy
- Partial OFF to ≤50% after period of vacancy ≤ 20min
- Manual On/Off/Raise/Lower control of fixtures
- Integral timeclock in NX enabled luminaires can also be utilized for standalone scheduled time-of-day operation of space with manual override switch and occupancy sensors

BILL OF MATERIALS

QTY.	Catalog #	Description
1	NXSW-WRS-WH	Battery-Operated Wireless Rocker Switch
2	NXWOM*	NX Enabled Current Fixture with Integral Wireless Occupancy/Daylight Sensor

\* See Integrated Control Options for Indoor Luminaires Ordering Logic and Description on pg. 54 for additional details.

OPERATIONAL DESCRIPTION

- 0-10V Dimmable fixtures
- Auto full ON upon occupancy
- Partial OFF to ≤50% after period of vacancy ≤ 20min
- Manual On/Off/Raise/Lower control of fixtures
- Integral timeclock in NX enabled luminaires can also be utilized for standalone scheduled time-of-day operation of space with manual override switch and occupancy sensors

BEST PRACTICE LAYOUT

- Fixture integrated NX sensors can be used for both occupancy sensing and daylight harvesting when required
- Switch stations should be located near each entrance to the space



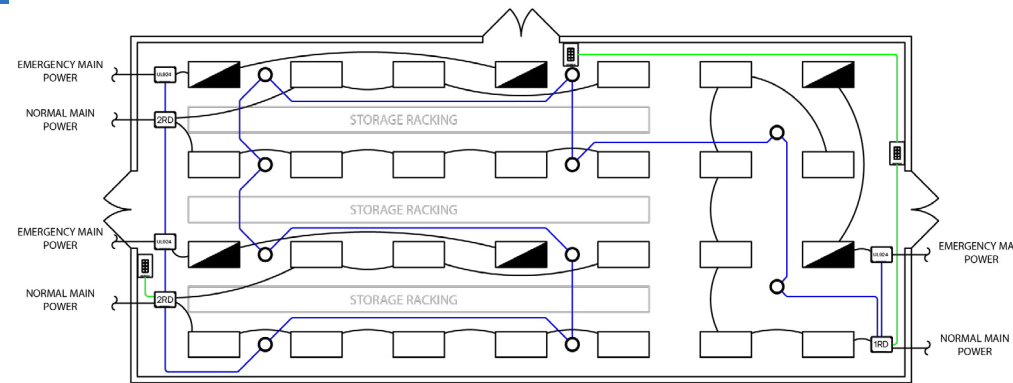
WAREHOUSE - WIRED

WAREHOUSE - WIRELESS



KEY

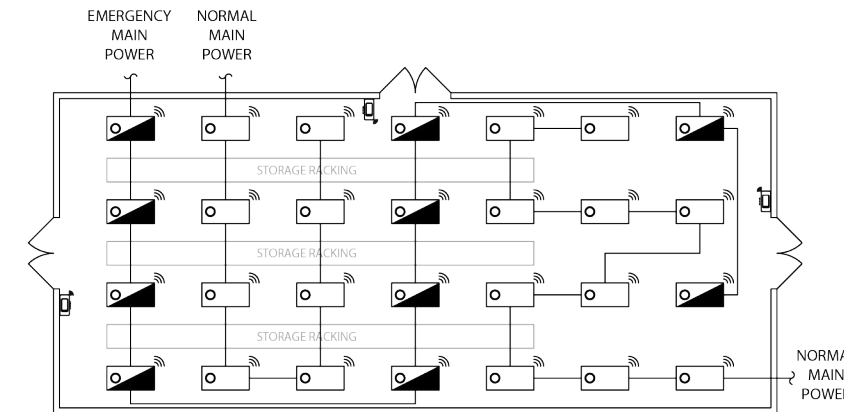
- 2RD Room Controller
- UL924 Room Controller
- 1RD Room Controller
- High Mount PIR Occupancy Sensor
- 8-Button Switch
- Main Power (120/277V)
- FX BUS CAT5
- SP BUS CAT5



Note: Drawings not shown to scale and are intended as illustrative example of the application.

KEY

- Wireless Rocker Switch
- Fixture Integrated Occupancy & Daylight Sensor
- Main Power (120/277V)



Note: Drawings not shown to scale and are intended as illustrative example of the application.

Wiring shown assumes emergency fixtures ordered with integral UL924 dimming bypass module. Please see fixture spec sheet for details on ordering options.

BEST PRACTICE LAYOUT

- Switch stations should be located near each entrance to the space
- Ensure proper placement of occupancy sensors in space, keeping clear of any obstructions
- Space can be networked back to an Area Controller for BMS integration or networked Automated Demand Response with only a few additional components, please see networking page for additional details

BILL OF MATERIALS

QTY.	Catalog #	Description
2	NXRCFX2-2RD-UNV	Room Controller with 2 Relays & 0-10V Dimming Outputs
5	NXRC-UL924-UNV	UL924 Emergency Room Controller with 1 Relay & (2) 0-10V Dimming Outputs
10	NXSMP2-HMO	High Mount PIR Occupancy Sensor
1	NXRCFX2-1RD-UNV	Room Controller with 1 Relay & 0-10V Dimming Output
3	NXSW2-8	8-Button Smart Switch

OPERATIONAL DESCRIPTION

- 0-10V Dimmable fixtures
- Auto full ON upon occupancy
- Partial OFF to ≤50% after period of vacancy ≤ 20min
- Manual On/Off/Raise/Lower control of fixtures

BILL OF MATERIALS

QTY.	Catalog #	Description
3	NXSW-WRS-WH	Battery-Operated Wireless Rocker Switch
28	NXWHM*	NX Enabled Current Fixture with Integral Wireless Occupancy/Daylight Sensor

\* See Integrated Control Options for Indoor Luminaires Ordering Logic and Description on pg. 54 for additional details.

OPERATIONAL DESCRIPTION

- 0-10V Dimmable fixtures
- Auto full ON upon occupancy
- Partial OFF to ≤50% after period of vacancy ≤ 20min
- Manual On/Off/Raise/Lower control of fixtures

BEST PRACTICE LAYOUT

- Fixture integrated NX sensors can be used for both occupancy sensing and daylight harvesting when required
- Switch stations should be located near each entrance to the space
- Space can be networked back to an Area Controller for BMS integration or networked Automated Demand Response with only a few additional components, please see networking page for additional details

### GYMNASIUM - WIRED

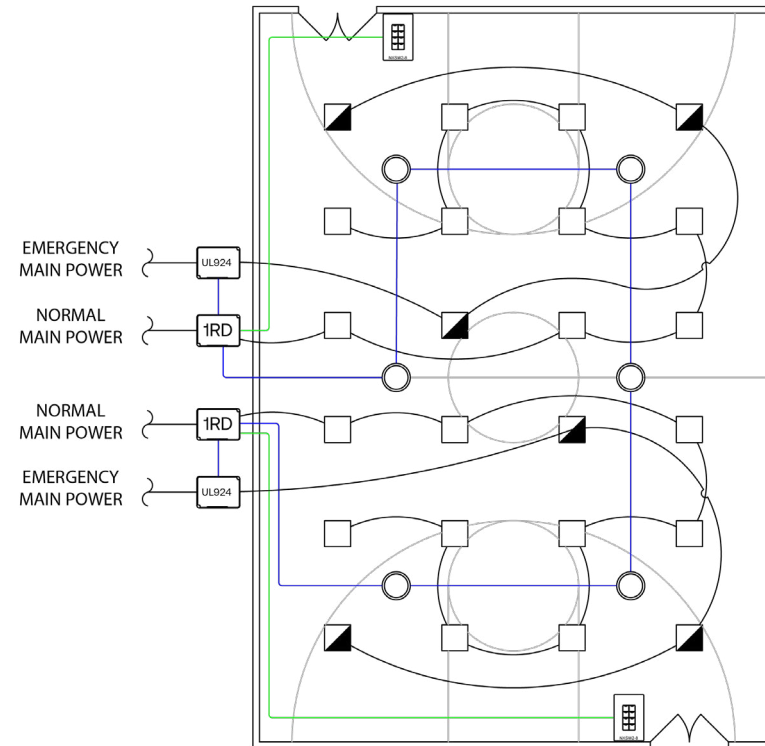
### GYMNASIUM - WIRELESS



#### KEY

- UL924 Room Controller
- 1RD Room Controller
- 8-Button Switch
- High Mount PIR Occupancy Sensor
- Main Power (120/277V)
- FX BUS CAT5
- SP BUS CAT5

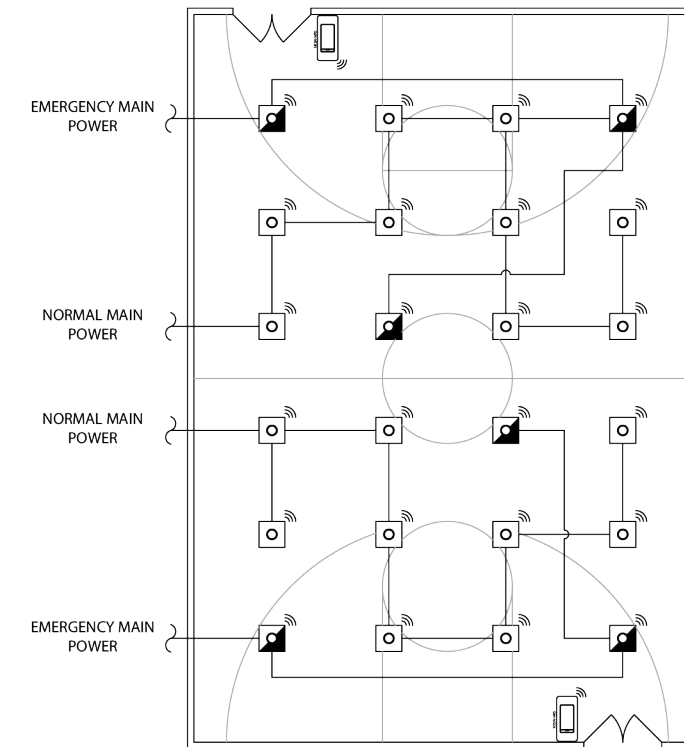
Note: Drawings not shown to scale and are intended as illustrative example of the application.



#### KEY

- Fixture Integrated Occupancy & Daylight Sensor
- Wireless Rocker Switch
- Main Power (120/277V)

Note: Drawings not shown to scale and are intended as illustrative example of the application.



Wiring shown assumes emergency fixtures ordered with integral UL924 dimming bypass module. Please see fixture spec sheet for details on ordering options.

#### BEST PRACTICE LAYOUT

- Switch stations should be located near each entrance to the space
- Ensure proper placement of occupancy sensors in space, keeping clear of any obstructions
- Space can be networked back to an Area Controller for BMS integration or networked Automated Demand Response with only a few additional components, please see networking page for additional details

#### BILL OF MATERIALS

QTY.	Catalog #	Description
2	NXRFX2-1RD-UNV	Room Controller with 1 Relay & 0-10V Dimming Output
2	NXSW2-8	8-Button Smart Switch
6	NXSMP2-HMO	High Mount PIR Occupancy & Daylight Sensor
2	NXRC-UL924-UNV	Emergency Room Controller with 1 Relay & (2) 0-10V Dimming Outputs

#### OPERATIONAL DESCRIPTION

- 0-10V Dimmable fixtures
- Auto ON to 50-70% upon occupancy, or manual ON
- Auto OFF after period of vacancy ≤20min
- Manual ON/OFF/Raise/Lower control of each group of fixtures

#### BILL OF MATERIALS

QTY.	Catalog #	Description
2	NXSW-WRS-WH	Battery-Operated Wireless Rocker Switch
1	NXWHM*	NX Enabled Current Fixture with Integral Wireless Occupancy/Daylight Sensor

\* See Integrated Control Options for Indoor Luminaires Ordering Logic and Description on pg. 54 for additional details.

#### OPERATIONAL DESCRIPTION

- 0-10V Dimmable fixtures
- Auto ON to 50-70% upon occupancy, or manual ON
- Auto OFF after period of vacancy ≤20min
- Manual ON/OFF/Raise/Lower control of fixtures

#### BEST PRACTICE LAYOUT

- Fixture integrated NX sensors can be used for both occupancy sensing and daylight harvesting when required
- Switch stations should be located near each entrance to the space
- Space can be networked back to an Area Controller for BMS integration or networked Automated Demand Response with only a few additional components, please see networking page for additional details



INTERIOR LEVEL PARKING GARAGE - WIRELESS

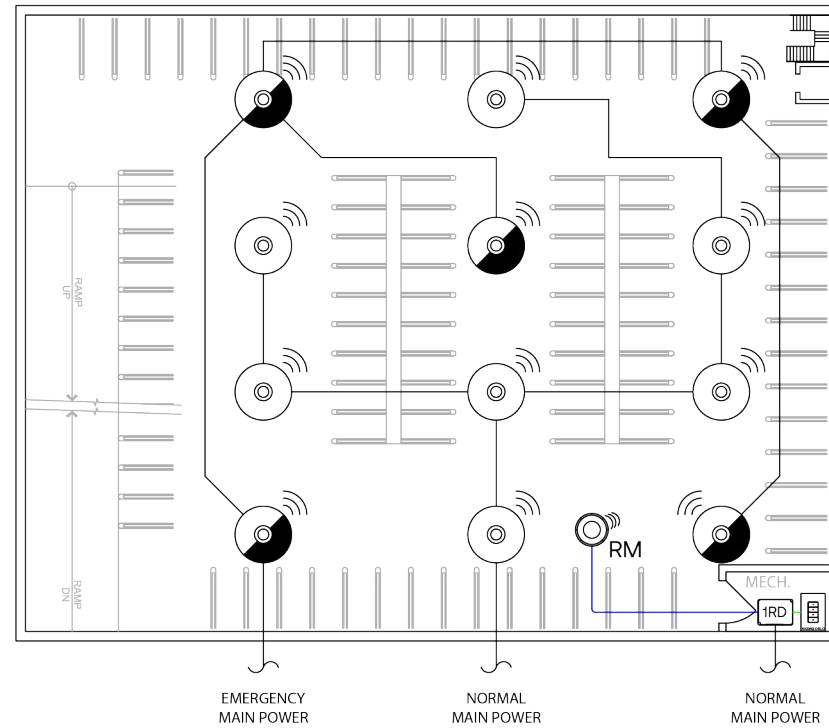
SITE WITH PARKING LOT - WIRELESS



KEY

- ORLO Switch
- 1RD Room Controller
- Fixture Integrated Occupancy & Daylight Sensor
- Radio Module
- Main Power (120/277V)
- FX BUS CAT5

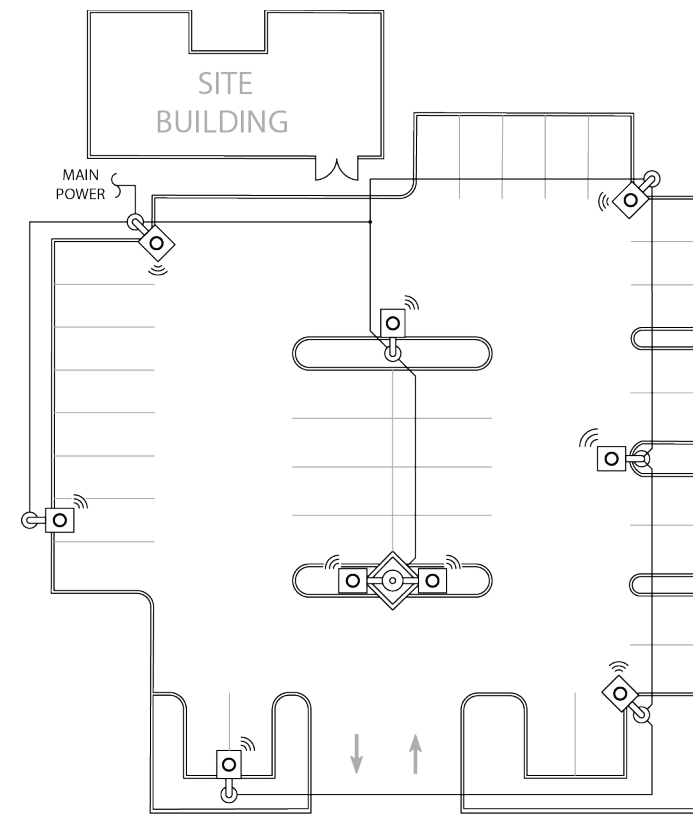
Note: Drawings not shown to scale and are intended as illustrative example of the application.



KEY

- Fixture Integrated Occupancy & Daylight Sensor
- Main Power (120/277V)

Note: Drawings not shown to scale and are intended as illustrative example of the application.



BEST PRACTICE LAYOUT

- Fixture integrated NX sensors can be used for both occupancy sensing and daylight harvesting when required
- Switch stations should be inaccessible to unauthorized personnel
- Space can be networked back to an Area Controller for BMS integration or networked Automated Demand Response with only a few additional components, please see networking page for additional details

Wiring shown assumes emergency fixtures ordered with integral UL924 dimming bypass module. Please see fixture spec sheet for details on ordering options.

BILL OF MATERIALS

QTY.	Catalog #	Description
1	NXRFX2-1RD-UNV	Room Controller with 1 Relay & 0-10V Dimming Output
1	NXRM2-H	Radio Module
1	NXSW2-ORLO	On/Raise/Lower/Off Specialty Switch
12	NXWS12F	NX Enabled Current Fixture with Integral Wireless Occupancy/Daylight Sensor

\* See Integrated Control Options for Indoor Luminaires Ordering Logic and Description on pg. 54 for additional details

OPERATIONAL DESCRIPTION

- 0-10V Dimmable fixtures
- Auto full ON upon occupancy
- Partial OFF to ≤50% after period of vacancy ≤ 20min
- Manual ON/OFF/Raise/Lower control of fixtures
- Control zones shall have a lighting load of ≤ 500W per zone

BILL OF MATERIALS

QTY.	Catalog #	Description
9	NXWS16F*	NX Enabled Current Fixture with Integral Wireless Occupancy/Daylight Sensor

\* See Integrated Control Options for Indoor Luminaires Ordering Logic and Description on pg. 49 for additional details

OPERATIONAL DESCRIPTION

- 0-10V Dimmable fixtures
- Auto full ON upon occupancy during active sensor hours
- Partial OFF to 10-50% after period of vacancy ≤15min when sensors are active
- Integral astronomical timeclock in NX enabled luminaires utilized for dusk to dawn operation

BEST PRACTICE LAYOUT

- Fixture integrated NX sensors can be used for both occupancy sensing and daylight harvesting when required
- For outdoor spaces, wireless enabled fixtures and radios shall be within 300' line of sight of at least two other wireless devices
- Space can be networked back to an Area Controller for BMS integration or networked Automated Demand Response with only a few additional components, please see networking page for additional details



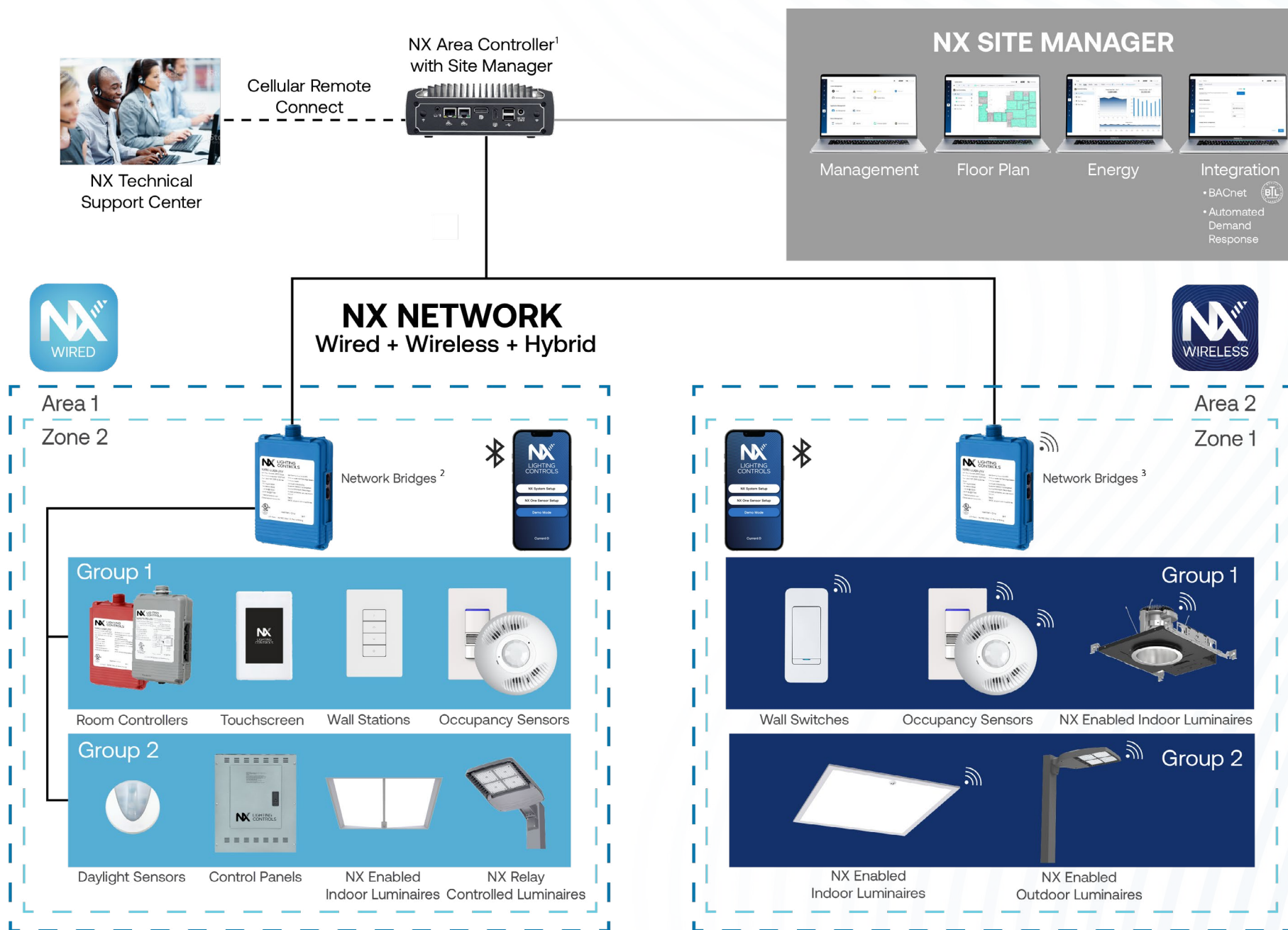


# NETWORKING OVERVIEW

The NX Lighting Controls System provides all the building blocks necessary for a secure, on-premise enterprise lighting management system. The system not only controls lighting, but also provides actionable information to Building Owners and Facility Managers to create energy efficient spaces and improve occupant experience.

## NX LIGHTING CONTROL SYSTEM

- Network of device and luminaires organized by Areas / Zones / Groups (AZG)
- NX wired & wireless devices and connected luminaires control lighting using relays and 0-10V dimming
- Wired devices connect using CAT5 cables and provide auto-configuration for basic code compliance
- Wireless devices are grouped together and communicate using secure AES 128-bit encrypted 2.4GHz wireless mesh technology based on the IEEE 802.15.4 standard. Network bridges manage NX Zones and connect wired and wireless zones to the NX Network
- NX Lighting Controls mobile app provides simple tool for quick device and system adjustments
- The NX Area Controller with Site Manager provides Building Owners & Facility Managers with multi-building lighting control, insights into their lighting system, and integration with Building Management Systems (BMS)



## SITE MANAGER

- Intuitive web-based, comprehensive lighting management console
- Visual insights into energy usage
- Manage lighting schedules
- Quickly respond to requests for light level changes or reported issues from floor plan views
- Integrate the lighting system to any BACnet compatible Building Management System (BMS)

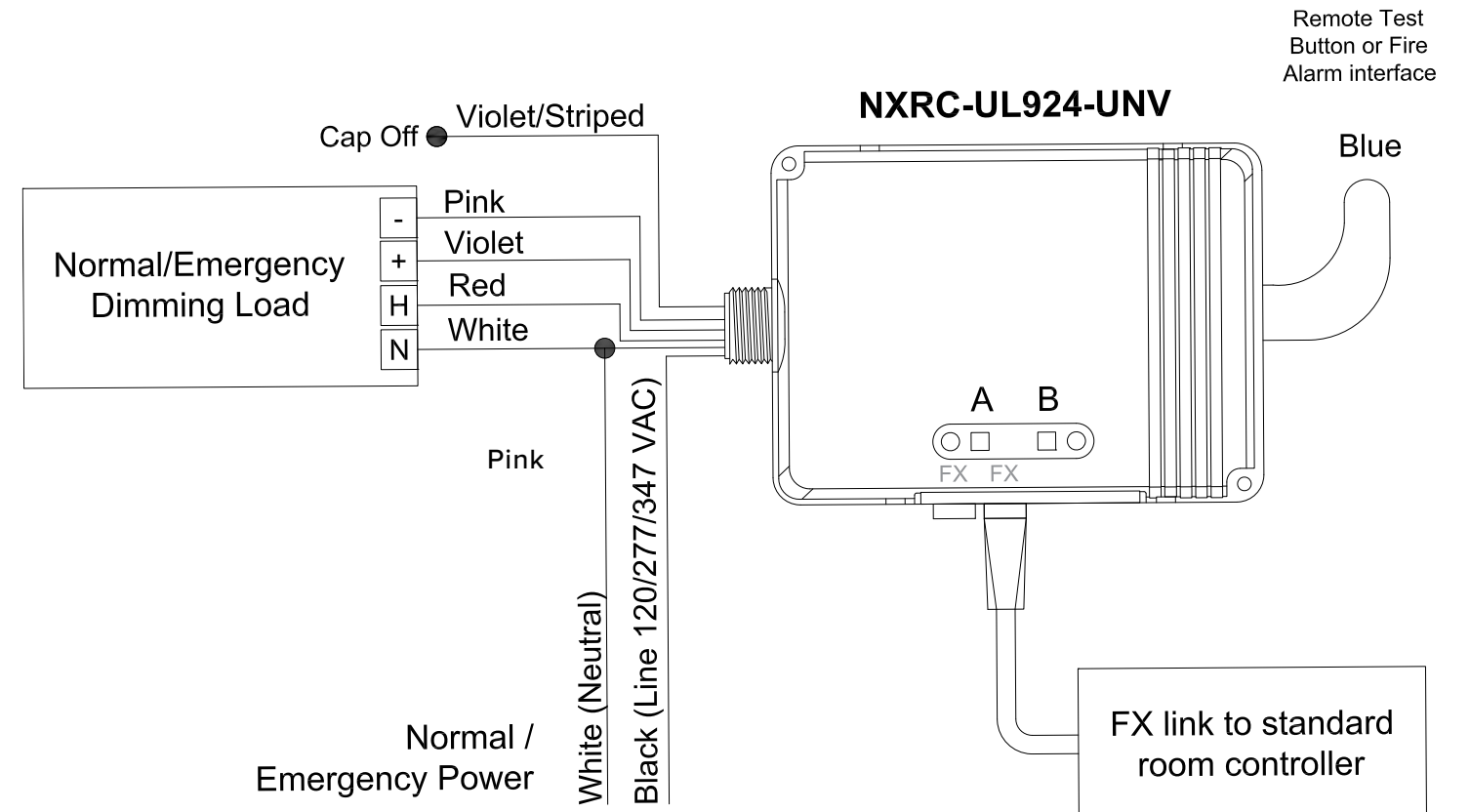
## PLATFORM SNAPSHOT

Space Type	Architecture	Deployment	Connectivity	Integration Options	Advance Solutions
Interior & Exterior	Distributed	Standalone & Network	Wired, Wireless, Hybrid	Contacts, BACnet™, OpenADR 2.0a/2.0b	SpectraSync™

The NX Lighting Controls system offers a completely integrated UL924 solution for emergency lighting controls that is less complicated and easier to install than classic standalone ALCR and BCELTS solutions. The NX UL924 Load Controller removes the need for complicated installations and wiring normally associated with UL924 solutions. The NX UL924 Load Controller senses normal power using a standard CAT5 connection to a NX Room Controller connected to normal power. In the event there is a loss of normal power the NX UL924 Load Controller will automatically bring the lights to full brightness, regardless of their current state. When normal power is restored all lighting returns to normal operation.

- UL924 Listed emergency lighting control device
- Meets NFPA Article 700 requirements for emergency lighting
- Single relay version with dual 0-10V interface for full range dimming control
- Automatically overrides lighting to emergency state upon loss of normal power
- Utilizes CAT5 connection to standard NX room controller for normal power sensing
- Full range continuous dimming defaults to full ON in emergency mode
- FX bus enabled and compatible with NXRCFX room controllers
- Provision for remote test button or fire alarm interface
- Advanced configuration, power metering, and control through either NX Area Controller or NX Lighting Controls mobile app

**NX UL924 SOLUTION**



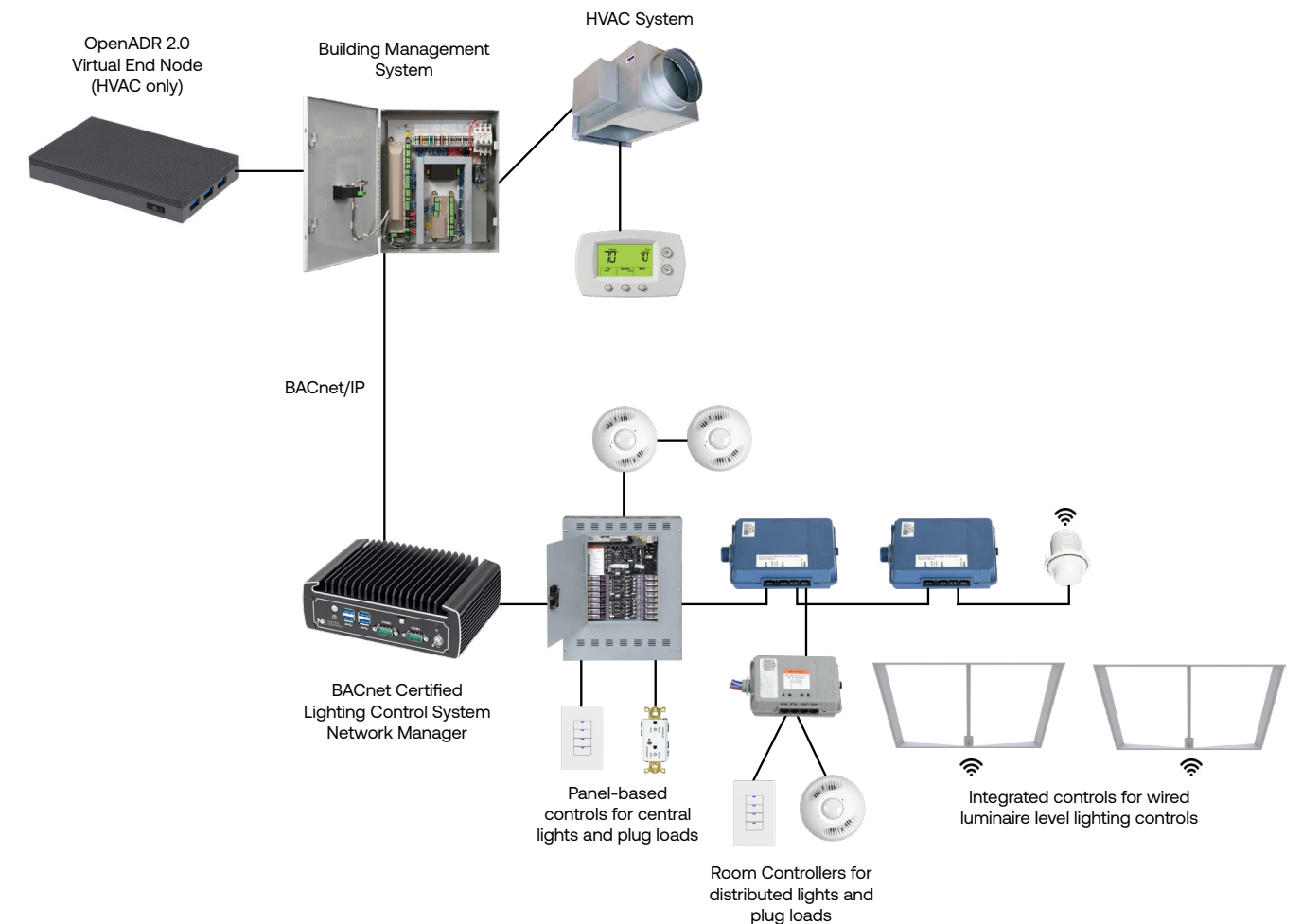
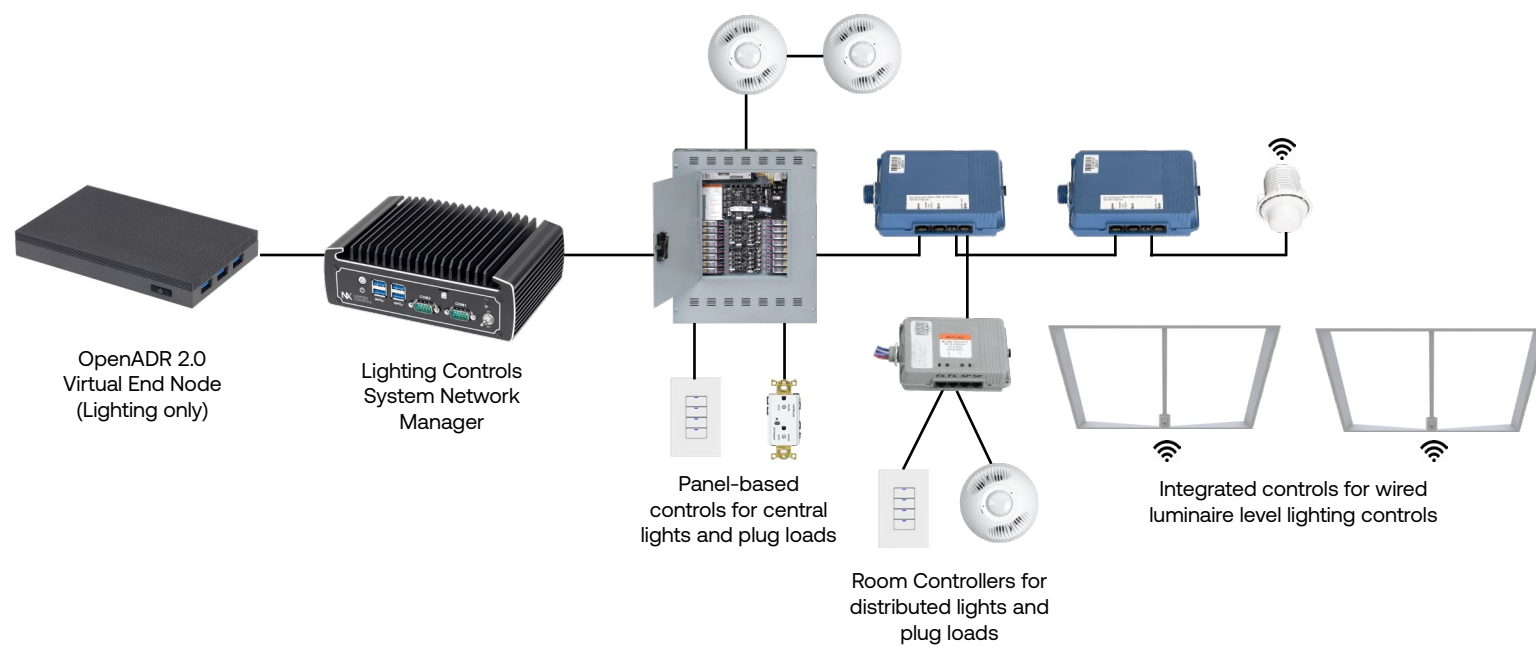


Certified to OpenADR 2.0b standard as a Virtual End Node (VEN)

- Allows for participation in Utility provided Demand Response programs
- Provide Bidirectional communications with Open standard for Smart Grid compatibility
- Provides an intuitive user interface for easy configuration of OpenADR settings
- Single normally open/normally closed output

OpenADR is an open, highly secure standard for Demand Response. Current's NX OpenADR solution (p/n NXOADR2B-VEN-DC) is a certified OpenADR 2.0 compliant Virtual End Node (VEN) that allows the NX Lighting Control System to participate in a bidirectional OpenADR 2.0 connection with a Utility Demand Response Automation Server (DRAS) to provide Automatic Demand Response and acknowledgments.

The NX OpenADR solution complies with California Title 24 110.12 mandatory energy code requirements for "buildings with non-residential lighting systems having a total installed lighting power of 4,000 watts or greater shall install controls that are capable of automatically reducing lighting power in response to a Demand Response Signal". The NX OpenADR solution reduces general lighting subject to Demand Response by 15% or greater uniformly within a space.





# MOBILE APP

The NX Lighting Controls mobile app helps provide quick, simple installation, and programming right in the palm of your hand.

The main app screen features the NX Lighting Controls logo and three primary buttons: "NX System Setup", "NX One Sensor Setup", and "Demo Mode". At the bottom, it displays the "Current" logo.

Below the main app screen, four smaller smartphone screens illustrate key features:

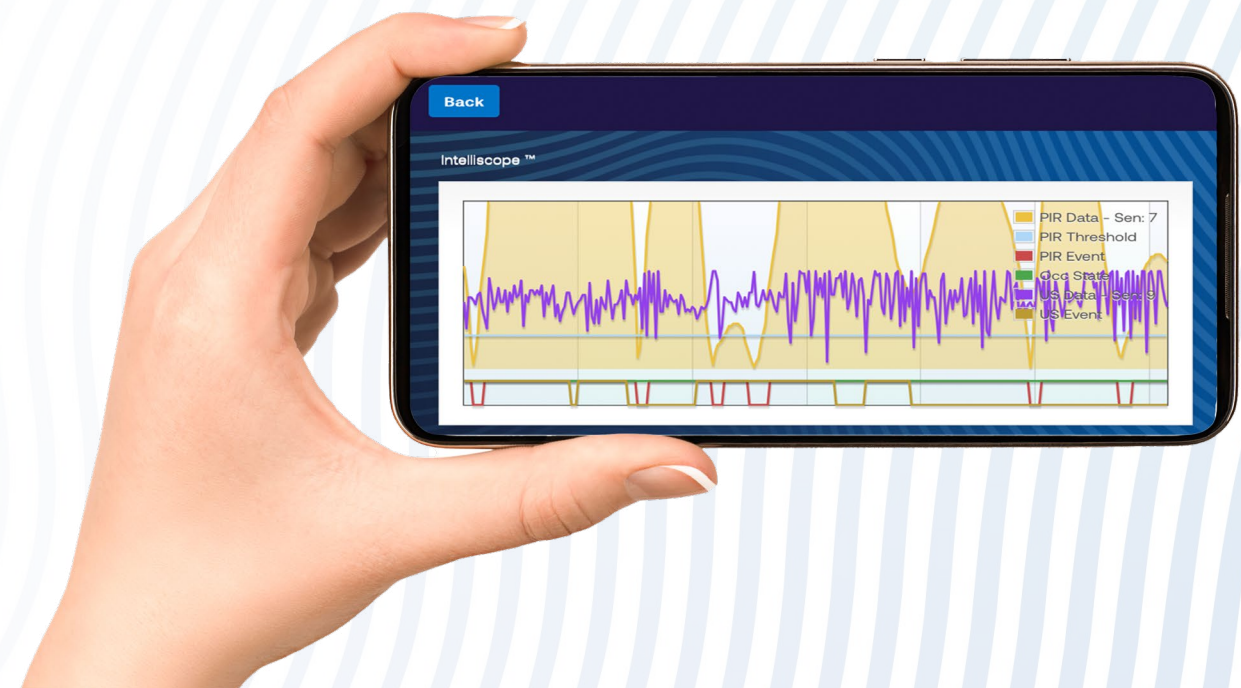
- AUTO-DISCOVERY**: Shows a list of discovered devices with details like MAC address and IP address.
- NETWORKING**: Displays network configuration options such as "New Network" and "New Device ID".
- DEVICE CONFIGURATION**: Shows a menu for configuring various device settings like "Fluorescent Modules", "Relays", "Dimmers", "Switches", "Smart Sensors", and "Legacy Daylight Sensors".
- OCCUPANCY SETTINGS**: Shows occupancy sensor settings, including "Occupancy Threshold" and "Occupancy Timeout".

At the bottom of this section, there are two QR codes and logos for the App Store and Google Play.

The NX Lighting Controls mobile app is a free to use mobile application for programming both an NX Lighting Controls System or Standalone Bluetooth Sensors. The app allows you to discover and configure wired and wireless devices and setup groups and zones for both standalone and networked NX sites. The app also provides access to IntelliSCOPE™ for real time occupancy data with any digital NX or standalone Bluetooth sensor. The NX Lighting Controls mobile app is available for download on both Apple iOS and Android devices.

- Enables easy setup, configuration and diagnostics of standalone Bluetooth sensors, NX room devices and NXP2 lighting control panels via Bluetooth BLE
- Create custom holidays, schedules, and presets (lighting scenes)
- Set geographical location of site for sunrise/sunset schedules
- Simple configuration of relay and dimmer settings for selected areas and zones
- Passcode protected to prevent unauthorized access to system
- Supports OTA (Over The Air) device updates
- Features IntelliSCOPE™ diagnostic tool for real-time calibration and testing of NX digital smart sensors

All NX wireless sensors come enabled with our proprietary IntelliSCOPE™ functionality, which provides true ladder-less programming and installation all with the click of a button. IntelliSCOPE™ provides real-time occupancy data to help optimize sensor detection in any application, which helps save time and money.





# PRODUCT CATALOG

CATALOG NO.	DESCRIPTOR	COLORS
<b>AREA CONTROLLERS</b>		
<a href="#">NXAC2-120-SM</a>	NX Area Controller V2 w/ NX Site Manager, NX Network, BACnet, 120V	Black
<a href="#">NXAC2-120-SMA</a>	NX Area Controller V2 w/NX Site Manager Adapter, NX Network, 120V	Black
<b>NETWORK DEVICES</b>		
<a href="#">NXHNB2</a>	NX Network Bridge Module, Connects Wired and Wireless Zones to NX Network, Internal Time Clock, Low Voltage	Blue
<a href="#">NXPOE-7-24B</a>	NX POE Switch/Power Injector, Seven RJ45 Powered NX Network Ports, One RJ45 Powered Uplink Port, 24VDC Power Supply (Included)	Black
<a href="#">NX-EOF-MC-01</a>	NX Media Converter, Ethernet Over Fiber, Copper: Single RJ45 Port (10/100BASE-T), Fiber: ST Connector (100BASE-X), 120V	Gray
<b>ROOM CONTROLLERS</b>		
<a href="#">NXRCFX2-1RD-UNV</a>	NX Room Controller, FX Bus Compatible, 1 Relay, 0-10V Dimming, Universal Voltage	Gray
<a href="#">NXRCFX2-2RD-UNV</a>	NX Room Controller, FX Bus Compatible, 2 Relay, 0-10V Dimming, Universal Voltage	Gray
<a href="#">NXRC-UL924-UNV</a>	UL924 Emergency Load Controller, 1 Relay, 0-10V Dimming, Universal Voltage	Red
<b>OCCUPANCY SENSORS</b>		
<a href="#">NXSMDT-OMNI-XX</a>	NX Digital Smart Occupancy Sensor, Ceiling Mount, PIR and Ultrasonic, with Daylight Harvesting, Integrated Bluetooth, mini SmartPORT	White, Black, Gray
<a href="#">NXSMDT-LHO-XX</a>	NX Digital Smart Occupancy Sensor, Wall Switch, PIR and Ultrasonic, with Daylight Harvesting, Integrated Bluetooth, Dual RJ45 SmartPORT, 0 Button	White, Black, Gray, Ivory, Light Almond, Red
<a href="#">NXSMDT-LH1-XX</a>	NX Digital Smart Occupancy Sensor, Wall Switch, PIR and Ultrasonic, with Daylight Harvesting, Integrated Bluetooth, Dual RJ45 SmartPORT, 1 Button	White, Black, Gray, Ivory, Light Almond, Red
<a href="#">NXSMDT-LH2-XX</a>	NX Digital Smart Occupancy Sensor, Wall Switch, PIR and Ultrasonic, with Daylight Harvesting, Integrated Bluetooth, Dual RJ45 SmartPORT, 2 Button	White, Black, Gray, Ivory, Light Almond, Red
<a href="#">NXSMIR-LH0-XX</a>	NX Digital Smart Occupancy Sensor, Wall Switch, PIR, with Daylight Harvesting, Integrated Bluetooth, Dual RJ45 SmartPORT, 0 Button	White, Black, Gray, Ivory, Light Almond, Red
<a href="#">NXSMIR-LH1-XX</a>	NX Digital Smart Occupancy Sensor, Wall Switch, PIR, with Daylight Harvesting, Integrated Bluetooth, Dual RJ45 SmartPORT, 1 Button	White, Black, Gray, Ivory, Light Almond, Red
<a href="#">NXSMIR-LH2-XX</a>	NX Digital Smart Occupancy Sensor, Wall Switch, PIR, with Daylight Harvesting, Integrated Bluetooth, Dual RJ45 SmartPORT, 2 Button	White, Black, Gray, Ivory, Light Almond, Red
<b>INTEGRATED SENSORS</b>		
<a href="#">NXSMP2-OMNI</a>	NX Digital Smart PIR Occupancy Sensor with Photocell and Bluetooth Programming, 360° Lens	White, Black, Gray
<a href="#">NXSMP2-LMI</a>	NX Digital Smart PIR Occupancy Sensor with Photocell and Bluetooth Programming, Low Mount/Indoor, 360° Lens	White, Black, Gray
<a href="#">NXSMP2-HMO</a>	NX Digital Smart PIR Occupancy Sensor with Photocell and Bluetooth Programming, High Mount/Outdoor, 360° Lens	White, Black, Gray
<a href="#">NXSMP2-LMO</a>	NX Digital Smart PIR Occupancy Sensor with Photocell and Bluetooth Programming, Low Mount/Outdoor, 360° Lens	White, Black, Gray
<b>DAYLIGHT SENSORS</b>		
<a href="#">NXDS</a>	NX Daylight Sensor	White
<a href="#">NXDS-O</a>	NX Daylight Sensor Outdoor	White

CATALOG NO.	DESCRIPTOR	COLORS
<b>WALL SWITCHES</b>		
<a href="#">NXSW2-1-XX</a>	NX Digital Smart Switch, 1 Button, Momentary, Pilot	White, Black, Gray, Ivory, Light Almond, Red
<a href="#">NXSW2-2-XX</a>	NX Digital Smart Switch, 2 Button, Momentary, Pilot	White, Black, Gray, Ivory, Light Almond, Red
<a href="#">NXSW2-3-XX</a>	NX Digital Smart Switch, 3 Button, Momentary, Pilot	White, Black, Gray, Ivory, Light Almond, Red
<a href="#">NXSW2-4-XX</a>	NX Digital Smart Switch, 4 Button, Momentary, Pilot	White, Black, Gray, Ivory, Light Almond, Red
<a href="#">NXSW2-5-XX</a>	NX Digital Smart Switch, 5 Button, Momentary, Pilot	White, Black, Gray, Ivory, Light Almond, Red
<a href="#">NXSW2-6-XX</a>	NX Digital Smart Switch, 6 Button, Momentary, Pilot	White, Black, Gray, Ivory, Light Almond, Red
<a href="#">NXSW2-8-XX</a>	NX Digital Smart Switch, 8 Button, Momentary, Pilot	White, Black, Gray, Ivory, Light Almond, Red
<a href="#">NXSW2-ORLO-XX</a>	NX Digital Specialty Switch, On/Raise/Lower/Off	White, Black, Gray, Ivory, Light Almond, Red
<a href="#">NXSW2-OO-XX</a>	NX Digital Specialty Switch, On/Off	White, Black, Gray, Ivory, Light Almond, Red
<a href="#">NXSW2-SS-XX</a>	NX Digital Specialty Switch, Scene Switch	White, Black, Gray, Ivory, Light Almond, Red
<a href="#">NXSW2-CCT-XX</a>	NX Digital Specialty Switch, CCT	White, Black, Gray, Ivory, Light Almond, Red
<a href="#">NXSW2-KEY-MNTD1-XX</a>	NX Digital Specialty Key Switch, Maintained 1 Pole/Single Throw	White, Black, Gray, Ivory, Light Almond, Red
<a href="#">NXSW2-KEY-MTRY1-XX</a>	NX Digital Specialty Key Switch, Momentary 1 Pole/Single Throw	White, Black, Gray, Ivory, Light Almond, Red
<a href="#">NXSW-TH3-WH</a>	NX SimpleTouch 3.5" full color graphic wall station	White
<a href="#">NXSW-WRS-WH</a>	NX Battery Powered Digital Switch Station, 2 Button configurable	White
<b>INTERFACES</b>		
<a href="#">NXCI</a>	NX Contact Closure Interface Module, Removable Terminal Block with 2 Switch Inputs, Dual RJ45 SmartPORTS	Silver
<a href="#">NXAVM</a>	NX Audio Visual Interface Module, Single DB9 Connector for RS232 Serial Communications, ASCII Based Command Set, Single RJ45 SmartPORT	Silver
<a href="#">NXRO</a>	NX Occupancy Output Interface Module, Low Voltage Form C NO/NC Relay Output, Removable Terminal Block, Dual RJ45 SmartPORTS	Silver
<a href="#">NXHDI</a>	NX Network Device Interface Module, Connects NXSP and NXCIO Devices to NX Network, Dual RJ45 SmartPORTS, DIN Rail Mount	Blue
<a href="#">NXSP</a>	NX SmartPORT Module, 4 SmartPORTS (8 RJ45 Connectors), DIN Rail Mount	Blue
<a href="#">NXDCIO</a>	NX Dry Contact Interface Module, 6 Low Voltage Inputs, 6 Form C NO/NC Outputs, DIN Rail Mount	Blue
<a href="#">NXOADR2-VEN-DC</a>	NX OpenADR 2.0a/2.0b Bidirectional Virtual End Node (VEN) Module with Two NO/NC Dry Contact Outputs, 120V	Black
<b>RADIO MODULES</b>		
<a href="#">NXOFM-1R1D-UNV</a>	NX 7-Pin On-Fixture Module, 1 Relay, 1 Dimmer, Universal Voltage (120V-480V)	Black
<a href="#">NXRM2-H</a>	NX Network Radio Module with Bluetooth Programming, 12 VDC, ISM 2.4GHz	White, Black, Gray
<a href="#">NXBTC</a>	NX RJ45 Bluetooth Radio Module with Time Server	Blue

# PRODUCT CATALOG

CATALOG NO.	DESCRIPTOR	COLORS
<b>ACCESSORIES</b>		
<a href="#">NXRJSPLITTER</a>	NX RJ45 Splitter 2-way Female for CAT5	Ivory
<a href="#">RJ45ADAPTER</a>	NX RJ45 Splitter 2-way Female for CAT5	Gray
<a href="#">NXFRD-UNV</a>	NX Forward & Reverse Phase Dimming Converter	Black
<a href="#">NXWPS</a>	NX Wall Partition Sensor	White
<b>LIGHTING CONTROL PANELS</b>		
<a href="#">NXP2-PNL-8-8-U-S</a>	NX Lighting Control Panel V2, 8 Relay Capacity, 8 Dimming Channels, 8-20A/Single Pole Latching Relays, 120/277VAC, Surface Mount	Gray
<a href="#">NXP2-PNL-8-0-U-S</a>	NX Lighting Control Panel V2, 8 Relay Capacity, 8 Dimming Channels, Relays Not Included, 120/277VAC, Surface Mount	Gray
<a href="#">NXP2-PNL-16-16-U-S</a>	NX Lighting Control Panel V2, 16 Relay Capacity, 16 Dimming Channels, 16-20A/Single Pole Latching Relays, 120/277VAC, Surface Mount	Gray
<a href="#">NXP2-PNL-16-0-U-S</a>	NX Lighting Control Panel V2, 16 Relay Capacity, 16 Dimming Channels, Relays Not Included, 120/277VAC, Surface Mount	Gray
<a href="#">NXP2-PNL-24-24-U-S</a>	NX Lighting Control Panel V2, 24 Relay Capacity, 24 Dimming Channels, 24-20A/Single Pole Latching Relays, 120/277VAC, Surface Mount	Gray
<a href="#">NXP2-PNL-24-0-U-S</a>	NX Lighting Control Panel V2, 24 Relay Capacity, 24 Dimming Channels, Relays Not Included, 120/277VAC, Surface Mount	Gray
<a href="#">NXP2-PNL-32-32-U-S</a>	NX Lighting Control Panel V2, 32 Relay Capacity, 32 Dimming Channels, 32-20A/Single Pole Latching Relays, 120/277VAC, Surface Mount	Gray
<a href="#">NXP2-PNL-32-0-U-S</a>	NX Lighting Control Panel V2, 32 Relay Capacity, 32 Dimming Channels, Relays Not Included, 120/277VAC, Surface Mount	Gray
<a href="#">NXP2-PNL-48-48-U-S</a>	NX Lighting Control Panel V2, 48 Relay Capacity, 48 Dimming Channels, 48-20A/Single Pole Latching Relays, 120/277VAC, Surface Mount	Gray
<a href="#">NXP2-PNL-48-0-U-S</a>	NX Lighting Control Panel V2, 48 Relay Capacity, 48 Dimming Channels, Relays Not Included, 120/277VAC, Surface Mount	Gray
<b>RELAYS</b>		
<a href="#">NXP2-RL-SP</a>	NX Lighting Control Panel V2 Relay, Single Pole, Latching, 120/227/347V, 20A- 50/60 Hz	Black
<a href="#">NXP2-RL-DP</a>	NX Lighting Control Panel V2 Relay, Double Pole, Latching, 208/240/480V, 20A- 50/60 Hz	Black

CATALOG NO.	DESCRIPTOR	COLORS
<b>NX IN-FIXTURE CABLES</b>		
<a href="#">NXCBL-P-10</a>	NX mini-Smart Port to Female RJ45 Plenum Cable, 10" length	Gray
<a href="#">NXCBL-P2-12</a>	NX mini-Smart Port to Dual RJ45 Plenum Cable, 12" length	Gray
<b>CAT5 SYSTEM CABLES</b>		
<a href="#">CAT5-3IN-OR-PLENUM</a>	CAT5 Cable, Plenum Rated, 3IN	Orange
<a href="#">CAT5-3F-OR-PLENUM</a>	CAT5 Cable, Plenum Rated, 3F	Orange
<a href="#">CAT5-10F-OR-PLENUM</a>	CAT5 Cable, Plenum Rated, 10F	Orange
<a href="#">CAT5-25F-OR-PLENUM</a>	CAT5 Cable, Plenum Rated, 25F	Orange
<a href="#">CAT5-50F-OR-PLENUM</a>	CAT5 Cable, Plenum Rated, 50F	Orange
<a href="#">CAT5-100F-OR-PLENUM</a>	CAT5 Cable, Plenum Rated, 100F	Orange








# PRODUCT CATALOG

NX Integrated Control Options for Indoor Luminaires Ordering Logic and Description		CONTROL OPTION FUNCTIONALITY									CONTROL OPTION COMPONENTS		
		Networkable	Grouping	Scheduling	Occupancy/ Motion	Daylight Harvesting	0-10V Dimming	On/Off Control	Bluetooth® App Programming	Sensor Max Height			
NX Wireless	NXW	NX Networked Wireless Radio Module NXRM2 and Bluetooth Programming, without Sensor	✓	✓	✓	-	-	✓	✓	✓	-		<a href="#">NXRM2-H</a>
	NXWSM	NX Networked Wireless Enabled Integral NXSMP2-SMI PIR Occupancy Sensor with Automatic Dimming Photocell and Bluetooth® Programming	✓	✓	✓	✓	✓	✓	✓	✓	12FT		<a href="#">NXSMP2-SMI</a>
	NXWRM	NX Networked Wireless Enabled Integral NXSMP2-LMI PIR Occupancy Sensor with Automatic Dimming Photocell and Bluetooth® Programming	✓	✓	✓	✓	✓	✓	✓	✓	12FT		<a href="#">NXSMP2-LMI</a>
	NXWOM	NX Networked Wireless Enabled Integral NXSMP2-OMNI PIR Occupancy Sensor with Automatic Dimming Photocell and Bluetooth® Programming	✓	✓	✓	✓	✓	✓	✓	✓	14FT		<a href="#">NXSMP2-OMNI</a>
	NXWLM	NX Networked Wireless Enabled Integral NXSMP2-LMO PIR Occupancy Sensor with Automatic Dimming Photocell and Bluetooth® Programming	✓	✓	✓	✓	✓	✓	✓	✓	16FT		<a href="#">NXSMP2-LMO</a>
	NXWHM	NX Networked Wireless Enabled Integral NXSMP2-HMO PIR Occupancy Sensor with Automatic Dimming Photocell and Bluetooth® Programming	✓	✓	✓	✓	✓	✓	✓	✓	45FT		<a href="#">NXSMP2-HMO</a>
NX Wired	NXE	NX Wired Dual RJ45 SmartPORTS, without Sensor	✓	✓	✓	-	-	✓	✓	✓	-		<a href="#">NXDSP</a>
	NXESM	NX Wired Dual RJ45 SmartPORTS and Integral NXSMP2-SMI PIR Occupancy Sensor with Automatic Dimming Photocell and Bluetooth® Programming	✓	✓	✓	✓	✓	✓	✓	✓	12FT		<a href="#">NXDSP</a> <a href="#">NXSMP2-SMI</a>
	NXERM	NX Wired Dual RJ45 SmartPORTS and Integral NXSMP2-LMI PIR Occupancy Sensor with Automatic Dimming Photocell and Bluetooth® Programming	✓	✓	✓	✓	✓	✓	✓	✓	12FT		<a href="#">NXDSP</a> <a href="#">NXSMP2-LMI</a>
	NXEOM	NX Wired Dual RJ45 SmartPORTS and Integral NXSMP2-OMNI PIR Occupancy Sensor with Automatic Dimming Photocell and Bluetooth® Programming	✓	✓	✓	✓	✓	✓	✓	✓	14FT		<a href="#">NXDSP</a> <a href="#">NXSMP2-OMNI</a>
	NXELM	NX Wired Dual RJ45 SmartPORTS and Integral NXSMP2-LMO PIR Occupancy Sensor with Automatic Dimming Photocell and Bluetooth® Programming	✓	✓	✓	✓	✓	✓	✓	✓	16FT		<a href="#">NXDSP</a> <a href="#">NXSMP2-LMO</a>
	NXEHM	NX Wired Dual RJ45 SmartPORTS and Integral NXSMP2-HMO PIR Occupancy Sensor with Automatic Dimming Photocell and Bluetooth® Programming	✓	✓	✓	✓	✓	✓	✓	✓	45FT		<a href="#">NXDSP</a> <a href="#">NXSMP2-HMO</a>

\*Please reference Current luminaire specification sheets for option availability.

# PRODUCT CATALOG

NX Integrated Control Options for Outdoor Luminaires Ordering Logic and Description		CONTROL OPTION FUNCTIONALITY								Sensor Max Height	CONTROL OPTION COMPONENTS			
		Networkable	Grouping	Scheduling	Occupancy	Daylight Harvesting	0-10V Dimming	On/Off Control	Bluetooth App Programming					
NX Wireless	NXOFM-1RID-UNV <small>(sold separate from luminaire)</small>	NX 7-Pin Twist-Lock® with NX Networked Wireless Radio, Integral Automatic Dimming Photocell, Integral Single Pole Relay with Dimming, and Bluetooth Programming		✓	✓	✓	-	✓	✓	✓	✓	-		<a href="#">NXOFM-1RID-UNV</a>
	NXW	NX Networked Wireless Radio Module NXRM2 and Bluetooth Programming, without Sensor		✓	✓	✓	-	-	✓	✓	✓	-		<a href="#">NXRM2-H</a>
	NXWS12F	NX Networked Wireless Enabled Integral NXSMP2-OMNI-O PIR Occupancy Sensor with Automatic Dimming Photocell and Bluetooth Programming		✓	✓	✓	✓	✓	✓	✓	✓	14FT		<a href="#">NXSMP2-OMNI-O</a>
	NXWS16F	NX Networked Wireless Enabled Integral NXSMP2-LMO PIR Occupancy Sensor with Automatic Dimming Photocell and Bluetooth Programming		✓	✓	✓	✓	✓	✓	✓	✓	16FT		<a href="#">NXSMP2-LMO</a>
	NXWS40F	NX Networked Wireless Enabled Integral NXSMP2-HMO PIR Occupancy Sensor with Automatic Dimming Photocell and Bluetooth Programming		✓	✓	✓	✓	✓	✓	✓	✓	40FT		<a href="#">NXSMP2-HMO</a>

\*Please reference Current luminaire specification sheets for option availability.



# Comprehensive Support Options to Meet Project Needs

## Contact Us

Call (800) 888-8006 and select one of the options listed below



Option 1  
Tech Support



Option 2  
Field Commissioning

Tech Support Hours: 7:00am - 7:00pm EST, Monday - Friday

Quotes, Applications, Layouts and Submittal Requests:  
controls-Design@currentlighting.com

Technical Support (troubleshooting, specifications, programming):

[currentlighting.com/controls/technical-services](http://currentlighting.com/controls/technical-services)



## Phone and Remote Support

While it is our goal to provide you with intelligent, simple and scalable control solutions, customer experience level and project complexity may necessitate additional support during the design development, construction and post-occupancy stages of a project. The support team is available for consultation to evaluate multiple control scenarios to identify the ideal lighting control device or system to meet energy code requirement and customer criteria. Additionally, our team of friendly and experienced professionals is enabled to assist on-site personnel, such as installation contractors, third party integrators, certified field technicians and facilities personnel, to quickly resolve issues and provide additional support.

## Warranty

Current provides a 5-year limited warranty for LED luminaires and Lighting Controls devices.



## On-site Support

Current offers on-site support service to ensure your project goes smoothly. While Current products are designed with simplicity in mind, some projects may benefit from a Field Service Engineer to perform an on-site pre-installation walk-through, after-hours and remote startup assistance, occupant training, sensor tuning, preset programming and other pre/post-occupancy services.

## Design Services



Our team of lighting control system design professionals are available to provide sensor layouts, networked system design services and third party integration support for new and retrofit projects. Our goal is to provide you with on-time and accurate delivery of design deliverables optimized for your specific application, compliant with local building codes and project specifications.

## The Institute



## Classroom Education

Current offers cutting edge educational opportunities at Institute facilities across the United States. Our headquarters, located in Greenville, SC houses one of the industries largest training facilities with over 25,000 square-feet and is engineered to present a total solutions approach to your lighting and controls challenges.

Additionally, we have dedicated Institute facilities in North Carolina and Texas as well as Current facility classrooms for in-person instruction across the United States.

## Virtual Education

Current's virtual education opportunities cover many facets of the lighting and controls industry including fundamentals, trends, technology, and product solutions. In addition, we can provide accredited continuing education (CEU) modules to help you maintain your certifications.

## Engage with us in a way that's best for you!

- An online university with modules designed for self pace individual learning consumed on-demand.
- Live (private) instructor-led training private events for individuals within your own organization designed specifically for your needs.
- Live (public) instructor led training public events highlighting new technologies, continuing education, and lighting trends.







ARCHITECTURAL AREA LIGHTING

BEACON

COLUMBIA LIGHTING

COMPASS

DUAL-LITE

EXO

FORUM

KIM LIGHTING

KURT VERSEN

LIFESHIELD

LITECONTROL

NX LIGHTING CONTROLS

PRESCOLITE

**Current - HLI Brands**

701 Millennium Blvd.  
Greenville, SC 29607

[currentlighting.com/nx-lighting-controls](https://currentlighting.com/nx-lighting-controls)

© 2023 HLI Solutions, Inc. All rights reserved. Information and specifications subject to change without notice. All values are design or typical values when measured under laboratory conditions.

(Rev 12/5/23)

**NX\_T24Guide\_R10**